

BERK

ENTERPRISES, INC.

Experts in Food Service Disposables

PRODUCT CATALOG



BERKLEY SQUARE PRODUCTS

Medium Weight Polypropylene Cutlery3
 Medium Weight Polypropylene Cutlery Kits.....4
 Heavy Weight Polypropylene Cutlery.....5
 Extra Heavy Weight Polypropylene Cutlery6
 Heavy Weight Polystyrene Bulk Cutlery7
 Heavy Weight Polystyrene Cutlery Kits8
 Retail & Catering Boxed Cutlery 10
 Microwavable Bowls & Lids..... 11
 Pop-Up & Roll Foil & Wrap 12
 Interfold, Cocktail, & Lunch Napkins 13
 PET Plastic Cups & Lids 14
 Clear & Black Soufflé Cups 15
 Wrapped & Unwrapped Straws 16
 Sip Sticks & Coffee Stirrers..... 17
 White & Kraft Paper Food Trays 18
 Black Plastic Tableware 19

ENVIRON PRODUCTS

Hot Drink Paper Cups20
 Earth Friendly Cup Carriers.....21
 Earth Friendly Hot Cups22
 Earth Friendly Soup Cups.....23
 Natural Cornstarch Cutlery24
 Bagasse Tableware.....25

CONCESSION PRODUCTS

Concession Product Line: Cold Drinks26
 Concession Product Line: Popcorn27
 Concession Product Line: Lemonade28
 Concession Product Line: Ice Cream.....29
 Concession Product Line: Fries & Nachos30
 Concession Product Line: Novelty31
 Concession Product Line: Tropical32
 Concession Product Line: Misc.....33



MEDIUM WEIGHT POLYPROPYLENE CUTLERY



ITEM#	DESCRIPTION	CASE CT.	WEIGHT	L X W X H	CUBE	TI/HI	UPC
MED. WT. POLYPROPYLENE BULK CUTLERY							
1011000	Med. Wt. PP White Knife Bulk	1,000	5.5	11.4 x 6.7 x 6.4	0.28	23 x 11	0-22361-01000-9
1012000	Med. Wt. PP White Fork Bulk	1,000	5.7	14.4 x 7.9 x 5.6	0.40	15 x 12	0-22361-02000-8
1013000	Med. Wt. PP White Teaspoon Bulk	1,000	5.7	13.6 x 7.4 x 6.3	0.36	18 x 11	0-22361-03000-7
1014000	Med. Wt. PP White Soupspoon Bulk	1,000	5.2	13.9 x 7.4 x 7.0	0.41	18 x 10	0-22361-04000-6
1015000	Med. Wt. PP White Spork Bulk	1,000	5.8	15.0 x 7.3 x 6.0	0.38	15 x 12	0-22361-05000-5
1016001	Med. Wt. PP White Soda Spoon Bulk	1,000	8.4	20.5 x 8.4 x 8.3	0.83	9 x 10	0-22361-89300-8
1016002	Med. Wt. PP Red Soda Spoon Bulk	1,000	8.4	20.5 x 8.4 x 8.3	0.83	9 x 10	0-22361-89301-5
1017000	Med. Wt. PP White Taster Spoon Bulk	3,000	6.6	15.2 x 6.7 x 9.4	0.55	15 x 9	0-22361-03330-5
1021000	Med. Wt. PP Black Knife Bulk	1,000	5.5	11.4 x 6.7 x 6.4	0.28	23 x 11	0-22361-41001-4
1022000	Med. Wt. PP Black Fork Bulk	1,000	5.7	14.4 x 7.9 x 5.6	0.40	15 x 12	0-22361-42000-6
1023000	Med. Wt. PP Black Teaspoon Bulk	1,000	5.7	13.6 x 7.4 x 6.3	0.36	18 x 11	0-22361-43000-5
1024000	Med. Wt. PP Black Soupspoon Bulk	1,000	5.2	13.9 x 7.4 x 7.0	0.41	18 x 10	0-22361-44000-4
1025000	Med. Wt. PP Black Spork Bulk	1,000	5.8	15.0 x 7.3 x 6.0	0.38	15 x 12	0-22361-45000-3

MED. WT. POLYPROPYLENE INDIVIDUALLY WRAPPED CUTLERY

1101000	Med. Wt. PP White Knife Wrapped 4/250ct	1,000	5.9	13.4 x 7.3 x 7.7	0.44	18 x 9	0-22361-01009-2
1102000	Med. Wt. PP White Fork Wrapped 4/250ct	1,000	6.0	12.2 x 9.1 x 8.1	0.52	15 x 9	0-22361-02009-1
1103000	Med. Wt. PP White Teaspoon Wrapped 4/250ct	1,000	6.0	11.8 x 8.5 x 7.9	0.46	15 x 9	0-22361-03009-0
1104000	Med. Wt. PP White Soupspoon Wrapped 4/250ct	1,000	6.0	12.2 x 8.3 x 8.9	0.52	15 x 9	0-22361-04009-9
1105000	Med. Wt. PP White Spork Wrapped 4/250ct	1,000	6.0	12.2 x 8.3 x 8.9	0.52	15 x 9	0-22361-05009-8
1107001	Med. Wt. PP White Soda Spoon Wrapped 4/250ct	1,000	8.4	18.1 x 11.2 x 8.9	1.04	9 x 8	0-22361-89302-2
1107003	Med. Wt. PP Red Soda Spoon Wrapped 4/250ct	1,000	8.4	18.1 x 11.2 x 8.9	1.04	9 x 8	0-22361-03332-9
1111000	Med. Wt. PP Black Knife Wrapped 4/250ct	1,000	5.9	13.4 x 7.3 x 7.7	0.44	18 x 9	0-22361-91009-5
1112000	Med. Wt. PP Black Fork Wrapped 4/250ct	1,000	6.0	12.2 x 9.1 x 8.1	0.52	15 x 9	0-22361-92009-4
1113000	Med. Wt. PP Black Teaspoon Wrapped 4/250ct	1,000	6.0	11.8 x 8.5 x 7.9	0.46	15 x 9	0-22361-93009-3
1114000	Med. Wt. PP Black Soupspoon Wrapped 4/250ct	1,000	6.0	12.2 x 8.3 x 8.9	0.52	15 x 9	0-22361-94009-2
1115000	Med. Wt. PP Black Spork Wrapped 4/250ct	1,000	6.0	12.2 x 8.3 x 8.9	0.52	15 x 9	0-22361-95009-1



MEDIUM WEIGHT POLYPROPYLENE CUTLERY KITS



ITEM#	DESCRIPTION	CASE CT.	WEIGHT	L X W X H	CUBE	TI/HI	UPC
MED. WT. POLYPROPYLENE CUTLERY KITS							
1131225	Med. Wt. PP Black Kit Knife, Fork, Teaspoon, S&P	250	5.4	15.0 x 6.9 x 8.7	0.52	15 x 9	0-22361-61556-3
1131240	Med. Wt. PP Black Kit Knife, Fork, Teaspoon, 12x13" Napkin, S&P	250	5.6	18.7 x 6.9 x 9.1	0.68	15 x 8	0-22361-81239-9
1131290	Med. Wt. PP Black Kit Knife, Fork, 12x13" Napkin	500	9.5	13.2 x 9.8 x 9.1	0.68	12 x 8	0-22361-87113-6
1171230	Med. Wt. PP White Kit Knife, Fork, Teaspoon	500	3.8	13.8 x 9.1 x 7.3	0.53	9 x 8	0-22361-01230-0
1171239	Med. Wt. PP White Kit Knife, Fork, Teaspoon, 12x13" Napkin	250	7.1	15.0 x 6.9 x 8.7	0.52	15 x 8	0-22361-01239-3
1171240	Med. Wt. PP White Kit Knife, Fork, Teaspoon, 12x13" Napkin	500	10.3	15.6 x 9.9 x 11.0	0.98	9 x 8	0-22361-01555-4
1171241	Med. Wt. PP White Kit Knife, Fork, Teaspoon, 12x13" Napkin, S&P	250	6.7	15.9 x 6.9 x 10.3	0.65	15 x 8	0-22361-61239-5
1171242	Med. Wt. PP White Kit Knife, Fork, Teaspoon, 12x13" Napkin, S&P	500	11.7	15.8 x 9.8 x 11.0	0.98	9 x 8	0-22361-61555-6
1171290	Med. Wt. PP White Kit Knife, Fork, 12x13" Napkin	500	8.5	17.3 x 9.8 x 9.3	0.91	8 x 10	0-22361-01290-4
1171291	Med. Wt. PP White Kit Knife, Fork, 12x13" Napkin, S&P	250	4.5	15.0 x 6.7 x 7.1	0.41	15 x 9	0-22361-61290-6
1171292	Med. Wt. PP White Kit Knife, Fork, 12x13" Napkin, S&P	500	9.0	15.8 x 9.8 x 9.5	0.85	9 x 8	0-22361-61291-3
1172369	Med. Wt. PP White Kit Fork, Teaspoon, Straw, 12x13" Napkin	1,000	6.8	18.5 x 14.2 x 11.0	1.67	8 x 6	0-22361-02369-6
1172370	Med. Wt. PP White Kit Fork, Teaspoon, Straw, 12x13" Napkin	500	10.4	15.8 x 9.3 x 10.6	0.90	14 x 7	0-22361-02365-8
1172390	Med. Wt. PP White Kit Fork, Teaspoon, 12x13" Napkin	500	9.7	15.8 x 9.1 x 10.2	0.85	7 x 10	0-22361-02390-0
1172680	Med. Wt. PP White Kit Fork, Straw, 10x12" Napkin	1,000	9.2	14.7 x 8.0 x 6.4	0.43	7 x 10	0-22361-02680-2
1172700	Med. Wt. PP White Kit Fork, 8x10" Napkin	1,000	8.2	15.8 x 11.8 x 7.9	0.85	8 x 10	0-22361-02700-7
1173670	Med. Wt. PP White Kit Teaspoon, Straw, 8x10" Napkin	1,000	8.4	15.3 x 8.7 x 10.1	0.78	7 x 10	0-22361-03670-2
1173700	Med. Wt. PP White Kit Teaspoon, 8x10" Napkin	1,000	8.7	18.5 x 8.9 x 10.3	0.98	10 x 7	0-22361-03700-6
1174670	Med. Wt. PP White Kit Soupspoon, Straw, 8x10" Napkin	1,000	9.6	15.8 x 9.3 x 7.9	0.67	7 x 10	0-22361-04670-1
1175670	Med. Wt. PP White Kit Spork (2.5g), Straw, 8x10" Napkin	1,000	9.6	15.8 x 8.7 x 9.6	0.76	7 x 10	0-22361-05670-0
1175700	Med. Wt. PP White Kit Spork, 8x10" Napkin	1,000	9.5	18.7 x 8.9 x 9.0	0.87	7 x 10	0-22361-05700-4
1175715	Med. Wt. PP White Kit Spork, 8x10" Napkin, S&P	500	7.2	17.5 x 6.3 x 8.8	0.56	16 x 10	0-22361-05701-1
1175716	Med. Wt. PP White Kit Spork, 8x10" Napkin, S&P	1,000	12.0	16.9 x 9.3 x 11.4	1.04	10 x 10	0-22361-87114-3
1176700	Napkin and Straw Kit Straw, 8x10" Napkin	2,000	6.3	16.3 x 10.5 x 10.1	1.01	10 x 10	0-22361-06700-3



HEAVY WEIGHT POLYPROPYLENE CUTLERY



ITEM#	DESCRIPTION	CASE CT.	WEIGHT	L X W X H	CUBE	TI/HI	UPC
HVY. WT. POLYPROPYLENE BULK CUTLERY							
1031007	Hvy. Wt. PP White Knife Bulk	1,000	12.8	15.0 x 7.3 x 8.0	0.51	15 x 9	0-22361-87968-2
1032007	Hvy. Wt. PP White Fork Bulk	1,000	11.0	15.0 x 9.2 x 7.4	0.59	13 x 9	0-22361-87969-9
1033007	Hvy. Wt. PP White Teaspoon Bulk	1,000	11.2	14.8 x 8.1 x 8.8	0.61	14 x 8	0-22361-87970-5
1035007	Hvy. Wt. PP Black Knife Bulk	1,000	12.8	15.0 x 7.3 x 8.0	0.51	15 x 9	0-22361-87971-2
1036007	Hvy. Wt. PP Black Fork Bulk	1,000	11.0	15.0 x 9.2 x 7.4	0.59	13 x 9	0-22361-87972-9
1037007	Hvy. Wt. PP Black Teaspoon Bulk	1,000	11.2	14.8 x 8.1 x 8.8	0.61	14 x 8	0-22361-43108-8
HVY. WT. POLYPROPYLENE INDIVIDUALLY WRAPPED CUTLERY							
1111007	Hvy. Wt. PP Black Knife Wrapped 4/250ct	1,000	10.7	15.8 x 7.9 x 9.5	0.69	13 x 8	0-22361-87974-3
1112008	Hvy. Wt. PP Black Fork Wrapped 4/250ct	1,000	12.3	15.7 x 12.2 x 9.7	1.08	10 x 8	0-22361-87975-0
1113007	Hvy. Wt. PP Black Teaspoon Wrapped 4/250ct	1,000	10.7	13.0 x 12.4 x 9.9	0.92	9 x 8	0-22361-87976-7
1038007	Hvy. Wt. PP Black Soupspoon Bulk	1,000	9.9	15.0 x 8.1 x 10.0	0.70	13 x 9	0-22361-88065-7
HVY. WT. POLYPROPYLENE CUTLERY KITS							
1138900	Hvy. Wt. PP Black Kit Knife, Fork, Teaspoon, 9x13" Napkin, S&P	250	9.9	18.9 x 8.3 x 12.6	1.14	10 x 8	0-22361-87979-8
1138910	Hvy. Wt. PP Black Kit Knife, Fork, 9x13" Napkin, S&P	250	10.6	17.3 x 8.1 x 8.6	0.69	10 x 9	0-22361-87980-4
1178900	Hvy. Wt. PP White Kit Knife, Fork, Teaspoon, 9x13" Napkin, S&P	250	10.5	18.9 x 8.3 x 12.6	1.14	10.7	0-22361-87977-4



HEAVY WEIGHT POLYSTYRENE BULK CUTLERY



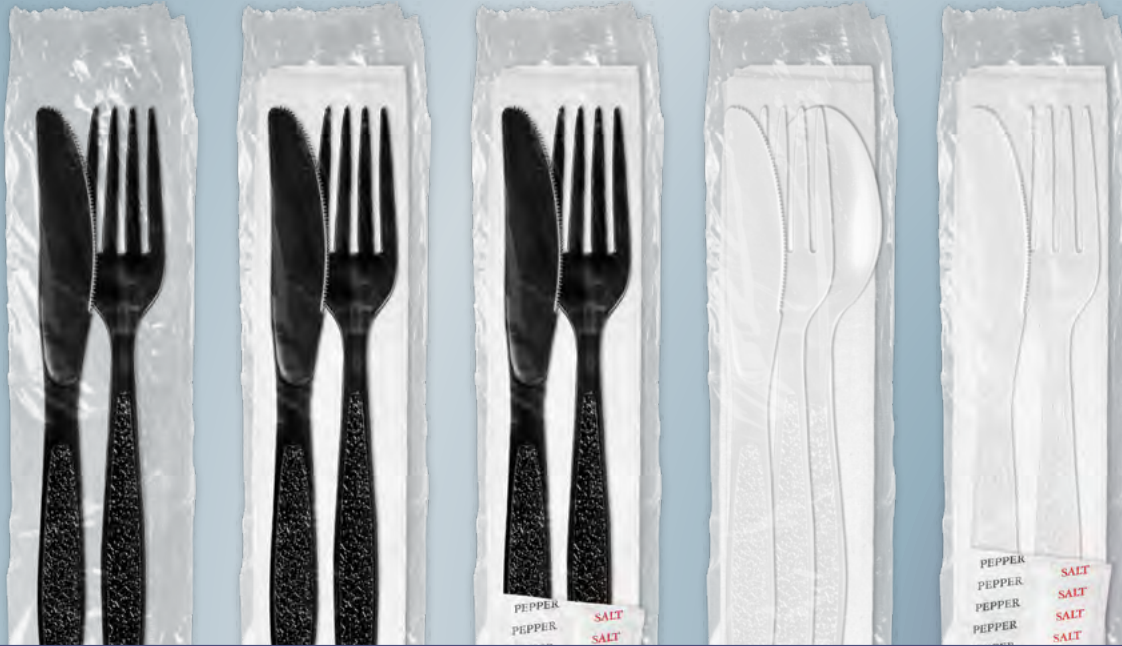
ITEM#	DESCRIPTION	CASE CT.	WEIGHT	L X W X H	CUBE	TI/HI	UPC
-------	-------------	----------	--------	-----------	------	-------	-----

HVY. WT. POLYSTYRENE BULK CUTLERY

1011008	Hvy. Wt. PS White Knife Bulk	1,000	13.2	15.7 x 7.9 x 7.1	0.51	15 x 12	0-22361-01008-5
1012008	Hvy. Wt. PS White Fork Bulk	1,000	13.2	13.0 x 9.1 x 7.5	0.47	13 x 10	0-22361-02008-4
1013008	Hvy. Wt. PS White Teaspoon Bulk	1,000	8.8	14.6 x 8.0 x 6.1	0.41	15 x 12	0-22361-03008-3
1014008	Hvy. Wt. PS White Soupspoon Bulk	1,000	11.0	14.2 x 8.9 x 6.3	0.46	13 x 10	0-22361-04008-2
1021008	Hvy. Wt. PS Black Knife Bulk	1,000	13.2	15.7 x 7.9 x 7.1	0.51	15 x 12	0-22361-41008-3
1022008	Hvy. Wt. PS Black Fork Bulk	1,000	13.2	13.0 x 9.1 x 7.5	0.47	13 x 10	0-22361-42008-2
1023008	Hvy. Wt. PS Black Teaspoon Bulk	1,000	8.8	14.6 x 8.0 x 6.1	0.41	15 x 12	0-22361-43008-1
1024008	Hvy. Wt. PS Black Soupspoon Bulk	1,000	11.0	14.2 x 8.9 x 6.3	0.46	13 x 10	0-22361-44008-0
1031008	Hvy. Wt. PS Silver Knife Bulk Pack	600	8.0	8.3 x 7.3 x 8.7	0.31	20 x 11	0-22361-89581-1
1032008	Hvy. Wt. PS Silver Fork Bulk Pack	600	8.8	11.8 x 7.9 x 8.5	0.46	18 x 9	0-22361-89554-5
1033008	Hvy. Wt. PS Silver Teaspoon Bulk Pack	600	7.5	8.5 x 7.5 x 12.6	0.46	23 x 8	0-22361-89582-8
1041008	Hvy. Wt. PS Clear Knife Bulk	1,000	13.2	15.7 x 7.9 x 7.1	0.51	15 x 12	0-22361-71008-4
1042008	Hvy. Wt. PS Clear Fork Bulk	1,000	13.2	13.0 x 9.1 x 7.5	0.47	13 x 10	0-22361-72008-3
1043008	Hvy. Wt. PS Clear Teaspoon Bulk	1,000	8.8	14.6 x 8.0 x 6.1	0.41	15 x 12	0-22361-73008-2
1044008	Hvy. Wt. PS Clear Soupspoon Bulk	1,000	11.0	14.2 x 8.9 x 6.3	0.46	13 x 10	0-22361-74008-1
1051008	Hvy. Wt. PS Almond Knife Bulk	1,000	13.2	15.7 x 7.9 x 7.1	0.51	15 x 12	0-22361-51008-0
1052008	Hvy. Wt. PS Almond Fork Bulk	1,000	13.2	13.0 x 9.1 x 7.5	0.47	13 x 10	0-22361-52008-9
1053008	Hvy. Wt. PS Almond Teaspoon Bulk	1,000	8.8	14.6 x 8.0 x 6.1	0.41	15 x 12	0-22361-53008-8
1054008	Hvy. Wt. PS Almond Soupspoon Bulk	1,000	11.0	14.2 x 8.9 x 6.3	0.46	13 x 10	0-22361-54008-7



HEAVY WEIGHT POLYSTYRENE CUTLERY KITS



ITEM#	DESCRIPTION	CASE CT.	WEIGHT	L X W X H	CUBE	TI/HI	UPC
HVY. WT. POLYSTYRENE INDIVIDUALLY WRAPPED CUTLERY							
1101003	Hvy. Wt. PS White Knife Wrapped 4/250ct	1,000	15.0	16.4 x 8.1 x 8.7	0.67	13 x 8	0-22361-01029-0
1102003	Hvy. Wt. PS White Fork Wrapped 4/250ct	1,000	15.4	16.6 x 8.5 x 8.5	0.69	10 x 9	0-22361-02029-9
1103003	Hvy. Wt. PS White Teaspoon Wrapped 4/250ct	1,000	8.8	13.8 x 10.4 x 8.3	0.69	10 x 9	0-22361-03029-8
1104003	Hvy. Wt. PS White Soupspoon Wrapped 4/250ct	1,000	11.0	12.8 x 10.4 x 9.6	0.74	12 x 8	0-22361-04029-7
1111002	Hvy. Wt. PS Black Knife Wrapped 4/250ct	1,000	15.0	16.4 x 8.1 x 8.7	0.67	13 x 8	0-22361-92029-2
1112002	Hvy. Wt. PS Black Fork Wrapped 4/250ct	1,000	15.4	16.6 x 8.5 x 8.5	0.69	10 x 9	0-22361-91029-3
1113002	Hvy. Wt. PS Black Teaspoon Wrapped 4/250ct	1,000	8.8	13.8 x 10.4 x 8.3	0.69	10 x 9	0-22361-93029-1
1114002	Hvy. Wt. PS Black Soupspoon Wrapped 4/250ct	1,000	11.0	12.8 x 10.4 x 9.6	0.74	12 x 8	0-22361-95449-5
MED. HVY. WT. POLYSTYRENE CUTLERY KITS							
1141240	Med. Hvy. Wt. PS Black Kit Knife, Fork, Teaspoon, 12x13" Napkin, S&P	250	7.3	19.1 x 7.9 x 9.7	0.84	12 x 6	0-22361-81238-2
1171295	Med. Wt. PS White Kit Knife, Fork, 12x13" Napkin, S&P	500	5.9	16.5 x 14.2 x 7.3	0.99	6 x 9	0-22361-96290-2
1181239	Med. Hvy. Wt. PS White Kit Knife, Fork, Teaspoon, 12x13" Napkin, S&P	250	7.8	20.1 x 8.7 x 8.2	0.83	12 x 9	0-22361-41234-6
HVY. WT. POLYSTYRENE CUTLERY KITS							
1151205	Hvy. Wt. PS Black Kit Knife, Fork	500	14.8	18.4 x 7.9 x 11.7	0.98	9 x 8	0-22361-87557-8
1151239	Hvy. Wt. PS Black Kit Knife, Fork, Teaspoon, 10x13" Napkin, S&P	250	12.0	17.7 x 8.1 x 11.8	0.98	10 x 8	0-22361-87933-0
1151240	Hvy. Wt. PS Black Kit Knife, Fork, 12x16" Napkin	500	13.2	18.5 x 15.7 x 8.3	1.39	6 x 8	0-22361-87500-4
1151290	Hvy. Wt. PS Black Kit Knife, Fork, 12x13" Napkin	500	17.0	16.9 x 10.6 x 11.4	1.18	9 x 8	0-22361-91290-7
1151291	Hvy. Wt. PS Black Kit Knife, Fork, 12x13" Napkin, S&P	250	13.2	14.6 x 8.3 x 9.4	0.66	14 x 8	0-22361-69129-1
1151292	Hvy. Wt. PS Black Kit Knife, Fork, 12x13" Napkin, S&P	500	17.3	16.9 x 10.6 x 11.4	1.18	9 x 7	0-22361-89488-3
1191239	Hvy. Wt. PS White Kit Knife, Fork, Teaspoon, 12x13" Napkin	250	13.2	17.7 x 8.3 x 10.2	0.87	10 x 8	0-22361-21239-7
1191241	Hvy. Wt. PS White Kit Knife, Fork, Teaspoon, 12x13" Napkin, S&P	250	11.7	17.7 x 8.3 x 11.8	1.00	10 x 7	0-22361-62931-7
1191290	Hvy. Wt. PS White Kit Knife, Fork, 12x13" Napkin, S&P	250	9.3	14.3 x 8.3 x 9.3	0.64	14 x 8	0-22361-62910-2
1191291	Hvy. Wt. PS White Kit Knife, Fork, 13x13" 2 Ply Napkin, S&P	500	20.3	18.0 x 9.5 x 9.3	0.92	6 x 8	0-22361-62900-3



EXTRA HEAVY WEIGHT POLYSTYRENE CUTLERY



ITEM#	DESCRIPTION	CASE CT.	WEIGHT	L X W X H	CUBE	TI/HI	UPC
XHVY. WT. POLYSTYRENE BULK CUTLERY							
1011009	XHvy. Wt. PS White Knife Bulk	1,000	15.8	15.7 x 7.9 x 7.5	0.54	15 x 10	0-22361-01007-8
1012009	XHvy. Wt. PS White Fork Bulk	1,000	15.8	13.8 x 9.1 x 7.5	0.55	13 x 10	0-22361-02007-7
1013009	XHvy. Wt. PS White Teaspoon Bulk	1,000	8.5	14.6 x 8.0 x 6.1	0.41	14 x 11	0-22361-03007-6
1021009	XHvy. Wt. PS Black Knife Bulk	1,000	15.8	15.7 x 7.9 x 7.5	0.54	15 x 10	0-22361-41007-6
1022009	XHvy. Wt. PS Black Fork Bulk	1,000	15.8	13.8 x 9.1 x 7.5	0.55	13 x 10	0-22361-42007-5
1023009	XHvy. Wt. PS Black Teaspoon Bulk	1,000	8.5	14.6 x 8.0 x 6.1	0.41	14 x 11	0-22361-43007-4
1041009	XHvy. Wt. PS Clear Knife Bulk	1,000	15.8	15.7 x 7.9 x 7.5	0.54	15 x 10	0-22361-71009-1
1042009	XHvy. Wt. PS Clear Fork Bulk	1,000	15.8	13.8 x 9.1 x 7.5	0.55	13 x 10	0-22361-72009-0
1043009	XHvy. Wt. PS Clear Teaspoon Bulk	1,000	8.5	14.6 x 8.0 x 6.1	0.41	14 x 11	0-22361-73009-9
1051009	XHvy. Wt. PS Almond Knife Bulk	1,000	15.8	15.7 x 7.9 x 7.5	0.54	15 x 10	0-22361-51009-7
1052009	XHvy. Wt. PS Almond Fork Bulk	1,000	15.8	13.8 x 9.1 x 7.5	0.55	13 x 10	0-22361-52009-6
1053009	XHvy. Wt. PS Almond Teaspoon Bulk	1,000	8.5	14.6 x 8.0 x 6.1	0.41	14 x 11	0-22361-53009-5
XHVY. WT. POLYSTYRENE INDIVIDUALLY WRAPPED CUTLERY							
1101004	XHvy. Wt. PS White Knife Wrapped 4/250ct	1,000	15.8	15.7 x 9.1 x 8.7	0.72	10 x 9	0-22361-01039-9
1102004	XHvy. Wt. PS White Fork Wrapped 4/250ct	1,000	15.8	16.1 x 11.6 x 8.3	0.90	10 x 9	0-22361-02039-8
1103004	XHvy. Wt. PS White Teaspoon Wrapped 4/250ct	1,000	9.2	13.8 x 10.4 x 8.3	0.69	10 x 9	0-22361-03039-7
1111003	XHvy. Wt. PS Black Knife Wrapped 4/250ct	1,000	15.8	15.7 x 9.1 x 8.7	0.72	10 x 9	0-22361-91039-2
1112003	XHvy. Wt. PS Black Fork Wrapped 4/250ct	1,000	15.8	16.1 x 11.6 x 8.3	0.90	10 x 9	0-22361-92039-1
1113003	XHvy. Wt. PS Black Teaspoon Wrapped 4/250ct	1,000	9.2	13.8 x 10.4 x 8.3	0.69	10 x 9	0-22361-88619-2
XHVY. WT. POLYSTYRENE CUTLERY KIT							
1161230	XHvy. Wt. PS Black Kit Knife, Fork, Teaspoon	500	15.8	18.9 x 15.7 x 7.9	1.36	6 x 9	0-22361-63930-9
1161239	XHvy. Wt. PS Black Kit Knife, Fork, Teaspoon, 12x13" Napkin, S&P	250	15.8	17.7 x 8.3 x 10.2	0.87	10 x 8	0-22361-63939-2
1201230	XHvy. Wt. PS White Kit Knife, Fork, Teaspoon	500	15.8	18.9 x 15.7 x 8.7	1.49	6 x 9	0-22361-09123-7



RETAIL & CATERING BOXED CUTLERY



ITEM#	DESCRIPTION	CASE CT.	WEIGHT	L X W X H	CUBE	TI/HI	UPC
HVY. WT. POLYSTYRENE RETAIL BOXED CUTLERY							
1061008	Hvy. Wt. PS White Knife Retail Box 10/100ct	1,000	13.2	14.6 x 8.2 x 8.7	0.60	14 x 8	0-22361-87445-8
1062008	Hvy. Wt. PS White Fork Retail Box 10/100ct	1,000	13.2	18.6 x 7.8 x 9.1	0.76	12 x 9	0-22361-87447-2
1063008	Hvy. Wt. PS White Teaspoon Retail Box 10/100ct	1,000	8.8	13.2 x 7.3 x 9.6	0.54	18 x 9	0-22361-87449-6
1064008	Hvy. Wt. PS White Soupspoon Retail Box 10/100ct	1,000	11.0	12.0 x 8.5 x 10.9	0.64	15 x 8	0-22361-87451-9
1071008	Hvy. Wt. PS Black Knife Retail Box 10/100ct	1,000	13.2	14.6 x 8.2 x 8.7	0.60	14 x 8	0-22361-87453-3
1072008	Hvy. Wt. PS Black Fork Retail Box 10/100ct	1,000	13.2	18.6 x 7.8 x 9.1	0.76	12 x 9	0-22361-87455-7
1073008	Hvy. Wt. PS Black Teaspoon Retail Box 10/100ct	1,000	8.8	13.2 x 7.3 x 9.6	0.54	18 x 9	0-22361-87457-1
1081008	Hvy. Wt. PS Clear Knife Retail Box 10/100ct	1,000	13.2	14.6 x 8.2 x 8.7	0.60	14 x 8	0-22361-87461-8
1082008	Hvy. Wt. PS Clear Fork Retail Box 10/100ct	1,000	13.2	18.6 x 7.8 x 9.1	0.76	12 x 9	0-22361-87463-2
1083008	Hvy. Wt. PS Clear Teaspoon Retail Box 10/100ct	1,000	8.8	13.2 x 7.3 x 9.6	0.54	18 x 9	0-22361-87465-6
1091008	Hvy. Wt. PS Almond Knife Retail Box 10/100ct	1,000	13.2	14.6 x 8.2 x 8.7	0.60	14 x 8	0-22361-87469-4
1092008	Hvy. Wt. PS Almond Fork Retail Box 10/100ct	1,000	13.2	18.6 x 7.8 x 9.1	0.76	12 x 9	0-22361-87471-7
1093008	Hvy. Wt. PS Almond Teaspoon Retail Box 10/100ct	1,000	8.8	13.2 x 7.3 x 9.6	0.54	18 x 9	0-22361-87473-1
COMBO PACKED CUTLERY							
1065008	Med. Hvy. Wt. 360 Count Party Pack PS White 60 Knives, 180 Forks, 120 Teaspoons 4/360	1,440	12.3	15.2 x 11.8 x 9.2	0.95	9 x 9	0-22361-87815-9
1088008	Hvy. Wt. PS Clear 360 Count Party Pack 60 Knives, 180 Forks, 120 Teaspoons 4/360ct	1,440	13.2	16.3 x 11.9 x 9.6	1.03	9 x 9	0-22361-87632-2
CATERING KITS							
1151600	Hvy. Wt. PS Cutlery Wrapped in Airlaid Napkin Black Knife, Fork, Teaspoon, 16.25x15" Napkin 4/50ct	200	14.8	17.0 x 14.4 x 14.4	2.04	6 x 5	0-22361-87697-1
1151615	Hvy. Wt. PS Cutlery Wrapped in 3-Ply Napkin Silver Knife, Fork, Teaspoon 16 x 16" Napkin 4/30ct	120	12.0	16.7 x 9.7 x 14.2	1.33	10 x 5	0-22361-89556-9





MICROWAVABLE BOWLS & LIDS

- Microwave Safe up to 230°F
- Available in Round and Rectangle Shapes
- Lids Feature Convenient Ventilation Hole



ITEM#	DESCRIPTION	CASE CT.	WEIGHT	L X W X H	CUBE	TI/HI	UPC
ROUND MICROWAVABLE BOWLS W/ LIDS							
3035111	16 oz. Black Microwavable Bowl w/ Clear Lid (6.3" x 2.1")	150	8.4	18.9 x 6.3 x 12.7	0.87	14 x 4	0-22361-90924-2
3035113	24 oz. Black Microwavable Bowl w/ Clear Lid (7.5" x 2.1")	150	12.4	21.7 x 7.3 x 13.2	1.38	10 x 5	0-22361-90925-9
3035114	32 oz. Black Microwavable Bowl w/ Clear Lid (7.5" x 2.5")	150	13.0	21.8 x 7.3 x 15.4	1.41	10 x 6	0-22361-90926-6
3035118	48 oz. Black Microwavable Bowl w/ Clear Lid (9.5" x 2.3")	150	22.5	28.3 x 9.8 x 14.7	2.34	10 x 4	0-22361-90927-3
RECTANGLE MICROWAVABLE CONTAINERS W/ LIDS							
3035120	12 oz. Black Microwavable Rectangle Container w/ Clear Lid	150	9.0	14.2 x 5.9 x 13.6	0.66	20 x 5	0-22361-90965-5
3035121	16 oz. Black Microwavable Rectangle Container w/ Clear Lid	150	10.4	16.3 x 7.8 x 12.0	0.89	15 x 5	0-22361-90932-7
3035122	24 oz. Black Microwavable Rectangle Container w/ Clear Lid	150	10.8	16.8 x 8.1 x 13.2	1.45	15 x 5	0-22361-90933-4
3035123	28 oz. Black Microwavable Rectangle Container w/ Clear Lid	150	14.6	18.3 x 9.0 x 12.4	1.18	15 x 5	0-22361-90934-1
3035124	32 oz. Black Microwavable Rectangle Container w/ Clear Lid	150	15.2	18.1 x 8.9 x 13.0	1.21	10 x 5	0-22361-90935-8
3035125	38 oz. Black Microwavable Rectangle Container w/ Clear Lid	150	15.9	18.1 x 8.9 x 13.0	1.21	7 x 6	0-22361-90936-5



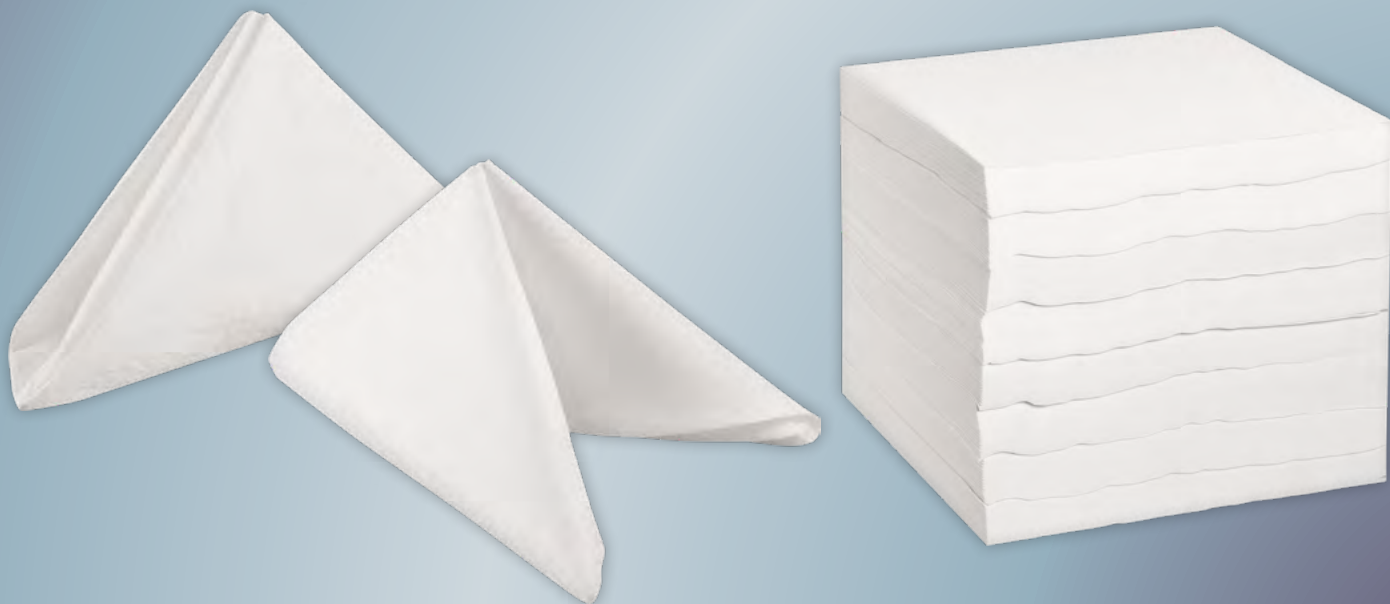
POP-UP & ROLL FOIL & WRAP



ITEM#	DESCRIPTION	CASE CT.	WEIGHT	L X W X H	CUBE	TI/HI	UPC
FOIL & FOODSERVICE WRAP							
1379500	Food Service Film 12" x 2000'	1 Roll	6.0	13.9 x 5.2 x 5.2	0.22	64 x 3	0-22361-89078-6
1379510	Food Service Film 18" x 2000'	1 Roll	8.6	19.9 x 5.2 x 5.2	0.31	64 x 2	0-22361-89079-3
1379512	Food Service Film 24" x 2000'	1 Roll	11.5	26.9 x 5.2 x 5.2	0.42	64 x 2	0-22361-89704-4
1371200	12 x 10.75" Pop-Up Foil Sheets 6/500ct	3,000	20.2	13.2 x 12.4 x 12.0	1.14	9 x 6	0-22361-87109-9
1371202	12 x 10.75" Pop-Up Foil Sheets 12/200ct	2,400	18.7	18.5 x 13.7 x 10.3	1.51	9 x 6	0-22361-89751-2
1379000	9 x 10.75" Pop-Up Foil Sheets 6/500ct	3,000	15.3	12.4 x 10.1 x 12.0	0.87	12 x 7	0-22361-87111-2
1379002	9 x 10.75" Pop-Up Foil Sheets 12/200ct	2,400	14.1	18.5 x 10.5 x 9.3	1.05	10 x 9	0-22361-87955-2
1371205	12" x 500' Standard Foil Roll	1	4.6	13.5 x 4.5 x 4.5	0.16	29 x 15	0-22361-87944-6
1371206	12" x 500' Heavy Foil Roll	1	6.0	13.5 x 4.5 x 4.5	0.16	29 x 15	0-22361-87950-7
1371210	12" x 1,000' Standard Foil Roll	1	8.2	13.5 x 4.5 x 4.5	0.16	29 x 15	0-22361-87945-3
1371805	18" x 500' Standard Foil Roll	1	6.4	19.3 x 4.5 x 4.5	0.16	16 x 15	0-22361-87947-7
1371806	18" x 500' Heavy Foil Roll	1	8.6	19.3 x 4.5 x 4.5	0.16	16 x 15	0-22361-87948-4
1371810	18" x 1,000' Standard Foil Roll	1	12.1	19.3 x 4.5 x 4.5	0.16	16 x 15	0-22361-87946-0
1371811	18" x 1,000' Heavy Foil Roll	1	17.0	19.3 x 4.5 x 4.5	0.16	16 x 15	0-22361-87949-1
1371812	24" x 1,000 Heavy Foil Roil	1	23.4	24.5 x 4.5 x 4.5	0.29	10 x 15	0-22361-89395-4
2272021	10.5 x 13" Quilted Foil - Red	5/500	25.0	13.4 x 10.6 x 5.6	0.46	10 x 10	0-22361-89391-6
2272022	10.5 x 13" Quilted Foil - Blue	5/500	25.0	13.4 x 10.6 x 5.6	0.46	10 x 10	0-22361-89392-3
2272023	10.5 x 13" Quilted Foil - Gold	5/500	25.0	13.4 x 10.6 x 5.6	0.46	10 x 10	0-22361-89393-0
2272024	10.5 x 13" Quilted Foil - Silver	5/500	25.0	13.4 x 10.6 x 5.6	0.46	10 x 10	0-22361-89394-7
2272025	10.5 x 13" Quilted Foil - Green	5/500	25.0	13.4 x 10.6 x 5.6	0.46	10 x 10	0-22361-89524-8
2273020	12" x 12" Foil Sandwich Wrap Plain 5/500ct	2,500	10.5	12.3 x 12.3 x 5.0	0.44	10 x 10	0-22361-89837-9
2273021	14" x 16" Foil Sandwich Wrap Plain 2/500ct	1,000	16.5	16.5 x 14.9 x 6.2	0.88	6 x 12	0-22361-89838-6



INTERFOLD, COCKTAIL, & LUNCH NAPKINS



ITEM#	DESCRIPTION	CASE CT.	WEIGHT	L X W X H	CUBE	TI/HI	UPC
NAPKINS							
2131147	12.75 x 15.75" White Non-Woven Airlaid Dinner Napkin 5/200ct	1,000	19.3	16.5 x 14.6 x 12.4	1.73	6 x 5	0-22361-88584-3
2152591	Interfold Dispenser Napkin, 1-Ply 9x13" Kraft Napkin 12/500ct	6,000	14.9	18.1 x 12.4 x 13.4	1.74	12 x 5	0-22361-88032-9
2152592	Interfold Dispenser Napkin, 1-Ply 9x13" White Napkin 12/500ct	6,000	14.9	18.1 x 12.4 x 13.4	1.74	12 x 5	0-22361-88579-9
2081170	Cocktail Napkin ,1-Ply 9 x 9" White 8/500ct	4,000	7.7	18.5 x 7.3 x 9.7	0.75	12 x 8	0-22361-87867-8
2081142	Cocktail Napkin, 2-Ply 9 x 9" Black 4/250ct	1,000	3.9	9.5 x 9.5 x 6.3	0.32	16 x 12	0-22361-90874-0
2131166	Lunch Napkin , 1- Ply 12 x 12 White 12/500ct	6,000	20.2	18.1 x 16.3 x 12.4	2.12	6 x 5	0-22361-87981-1
2151025	Off Fold Napkin 1-Ply 12 x 13" White 12/500	6,000	22.5	20.3 x 15.0 x 13.8	2.43	5 x 5	0-22361-88632-1
2131167	Off Fold Napkin 1-Ply 12 x 13" Kraft 12/500	6,000	26.0	20.3 x 15.0 x 13.8	2.43	5 x 5	0-22361-89580-4





PET PLASTIC CUPS & LIDS



ITEM#	DESCRIPTION	CASE CT.	WEIGHT	L X W X H	CUBE	TI/HI	UPC
PET CUPS							
3051783	10 oz. Clear PET Cup	1,000	21.0	16 x 12.9 x 16.8	2	9 x 5	0-22361-90836-8
3051774	12 oz. Clear PET Cup	1,000	28.0	19 x 15.5 x 18	3	6 x 4	0-22361-90733-0
3051776	16 oz. Clear PET Cup	1,000	34.0	20.3 x 16.3 x 16.1	3	6 x 4	0-22361-88833-2
3051778	20 oz. Clear PET Cup	1,000	36.22	19.92 x 15.87 x 16.54	3	8 x 4	0-22361-89339-8
3051777	24 oz. Clear PET Cup	600	25.57	15.75 x 12 x 18.75	2	8 x 4	0-22361-89041-0
3051779	32 oz. Clear PET Cup	300	16.53	13.2 x 9.1 x 26.7	1.9	8 x 4	0-22361-90299-1



ITEM#	DESCRIPTION	CASE CT.	WEIGHT	L X W X H	CUBE	TI/HI	UPC
PET CUP LIDS							
3051770	Lid - fits 10 oz. PET Cup	1,000	4.0	17.72 x 7.09 x 16.54	1.2	5 x 7	0-22361-91055-2
3051781	Lid - fits 12 - 24 oz. PET Cups	1,000	8.16	21 x 17.25 x 9.5	1.9	4 x 8	0-22361-89043-4
3051782	Lid - fits 32 oz. PET Cup	500	11.9	22.2 x 18.7 x 9.5	2.28	5 x 7	0-22361-89043-4
3052995	Dome Lid - fits 12 - 24 oz. PET Cups	1,000	8.38	20.12 x 18.98 x 8.27	1.8	12 x 9	0-22361-87626-1
3051788	Lid w/ Sip-thru Hole - fits 12 - 24 oz. PET Cups	1,000	9.48	20.12 x 8.27 x 20.67	2	10 x 5	0-22361-90457-5



CLEAR & BLACK SOUFFLÉ CUPS

- Cups Made from Polypropylene
- Lids Made from Clear PET Plastic



ITEM#	DESCRIPTION	CASE CT.	WEIGHT	L X W X H	CUBE	TI/HI	UPC
CLEAR SOUFFLÉ CUPS							
3051580	#SC-075 0.75 oz. Clear Soufflé Cup (22ml) (10/250)	2,500	6.6	16.5 x 7.5 x 9.5	0.68	15 x 8	0-22361-88596-6
3051581	#SC-100 1 oz. Clear Soufflé Cup (30ml) (10/250)	2,500	7.7	19.2 x 9.7 x 8.1	0.87	12 x 9	0-22361-88597-3
3051582	#SC-150 1.5 oz. Clear Soufflé Cup (44ml) (10/250)	2,500	13.1	19.7 x 12.4 x 10.1	1.43	10 x 7	0-22361-88598-0
3051583	#SC-200 2 oz. Clear Soufflé Cup (59ml) (10/250)	2,500	13.5	21.5 x 12.9 x 10.7	1.72	8 x 7	0-22361-88599-7
3051605	#SC-325 3.25 oz. Clear Soufflé Cup (96ml) (20/125)	2,500	19.1	22.9 x 15.8 x 8.3	1.74	7 x 6	0-22361-88975-9
3051606	#SC-400 4 oz. Clear Soufflé Cup (118ml) (20/125)	2,500	21.4	28.9 x 11.9 x 9.6	1.91	8 x 5	0-22361-88976-6
3051607	#SC-550 5.5 oz. Clear Soufflé Cup (163ml) (20/125)	2,500	25.8	23.6 x 15.2 x 12.0	2.49	5 x 6	0-22361-89550-7

BLACK SOUFFLÉ CUPS

3051573	#BSC-200 2 oz. Black Soufflé Cup (59ml) (10/250)	2,500	12.8	21.3 x 12.9 x 10.7	1.70	8 x 7	0-22361-88621-5
3051595	#BSC-325 3.25 oz. Black Soufflé Cup (96ml) (20/125)	2,500	22.0	18.1 x 12.0 x 15.0	1.89	7 x 5	0-22361-88973-5
3051596	#BSC-400 4 oz. Black Soufflé Cup (118ml) (20/125)	2,500	23.0	18.7 x 12.0 x 15.0	1.95	7 x 5	0-22361-88974-2

SOUFFLÉ CUP LIDS

3051588	#SL-100 Clear PET Lid - fits 0.75, 1 oz. Cup (20/125)	2,500	4.0	16.5 x 10.0 x 7.9	0.75	10 x 8	0-22361-88604-8
3051589	#SL-200 Clear PET Lid - fits 1.5, 2.5 oz. Cup (20/125)	2,500	7.8	18.1 x 13.2 x 10.6	1.47	10 x 7	0-22361-88605-5
3051610	#SL-400 Clear PET Lid - fits 3.25, 4, 5 oz. Cup (20/125)	2,500	9.9	17.3 x 16.9 x 13.3	2.25	7 x 6	0-22361-88977-3
3051590	#SL-550 Clear PET Lid - fits 5.5 oz Cup (20/125)	2,500	9.1	15.8 x 12.3 x 19.0	2.14	9 x 4	0-22361-88606-2



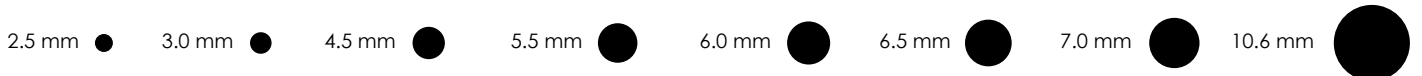


WRAPPED & UNWRAPPED STRAWS



ITEM#	DESCRIPTION	CASE CT.	WEIGHT	L X W X H	CUBE	TI/HI	UPC
DRINK STRAWS							
1244007	5.75" Unwrp. Jumbo Straw Black 10/500ct (6mm)	5,000	6.2	24.3 x 10.3 x 6.3	0.91	8 x 12	0-22361-88087-9
1246100	5.75" Wrp. Milk Straw Red 24/500ct (4.5mm)	12,000	12.6	27.5 x 7.9 x 19.3	2.43	6 x 4	0-22361-80007-5
1244019	7.75" Unwrp. Jumbo Straw Clear 24/500ct (5.5mm)	12,000	17.0	20.3 x 15.3 x 16.3	2.92	6 x 5	0-22361-80005-1
1244020	7.75" Unwrp. Jumbo Straw White w/ Red Stripe 24/500ct (5.5mm)	12,000	17.8	20.3 x 15.3 x 16.3	2.92	6 x 5	0-22361-87824-1
1244021	7.75" Wrp. Jumbo Straw White w/ Red Stripe 24/500ct (5.5mm)	12,000	21.0	23.6 x 17.7 x 18.1	4.37	4 x 4	0-22361-80004-4
1244022	7.75" Wrp. Jumbo Straw Clear 24/500ct (5.5mm)	12,000	22.0	23.3 x 18.1 x 18.1	4.41	4 x 4	0-22361-87688-9
1244039	7.75" Unwrp. Jumbo Straw Black 50/250ct (6mm)	12,500	17.0	18.0 x 18.0 x 16.2	3.09	4 x 5	0-22361-88407-5
1245100	7.75" Wrp. Flexible Straw White 25/400ct (6mm)	10,000	20.4	18.0 x 14.5 x 28.6	4.32	6 x 3	0-22361-80001-3
1244006	7.75" Unwrp. Super Jumbo Straw Asst. Neon 40/250ct (7mm)	10,000	21.0	22.8 x 18.5 x 16.0	3.90	4 x 5	0-22361-87545-5
1244031	7.75" Wrp. Giant Straw White w/ Red Stripe 24/300ct (7mm)	7,200	19.6	22.9 x 17.0 x 18.2	4.10	4 x 4	0-22361-87849-4
1244033	7.75" Unwrp. Giant Straw White w/ Red Stripe 50/150ct (7mm)	7,500	17.8	18.0 x 18.3 x 17.1	3.26	4 x 5	0-22361-87941-5
1244036	7.75" Wrp. Super Giant Straw White w/ Red Stripe 24/300ct (8mm)	7,200	20.7	24.1 x 18.0 x 18.1	4.54	4 x 4	0-22361-87904-0
1244040	7.75" Wrp. Jumbo Straw Black 24/500ct (5.5mm)	12,000	20.5	23.6 x 18.2 x 17.8	4.42	4 x 4	0-22361-87861-6
1245124	7.75" Wrp. Super Giant Straw Asst. Neon 24/300ct (8mm)	7,200	20.5	24.3 x 18.2 x 18.1	4.63	4 x 4	0-22361-88511-9
1246200	7.75" Wrp. Jumbo Straw Clear 10/500ct (5.5mm)	5,000	9.0	29.0 x 9.4 x 12.2	1.92	6 x 7	0-22361-87908-8
1243999	8.25" Wrp. Spoon Straw Asst. Neon 25/400ct (6.5mm)	10,000	26.8	31.3 x 10.6 x 31.1	5.97	5 x 2	0-22361-87497-7
1243998	10.25" Wrp. Spoon Straw Red 4/300ct (6.5mm)	1,200	4.6	11.0 x 11.2 x 12.3	0.88	12 x 6	0-22361-88022-0
1244000	8.25" Unwrp. Spoon Straw Asst. Neon 25/400ct (6.5mm)	10,000	21.0	27.5 x 9.2 x 27.0	3.95	6 x 3	0-22361-80003-7
1249008	8.5" Unwrp. Smoothie Straw Clear w/ Asst. Stripe 40/50ct (10.6mm)	2,000	9.4	17.4 x 12.6 x 17.6	2.23	8 x 4	0-22361-88127-2
1249009	8.5" Film Wrp. Smoothie Straw, Clear w/ Asst. Stripe 40/50ct (10.6mm)	2,000	10.4	22.0 x 10.6 x 19.8	2.67	8 x 4	0-22361-88128-9
8021857	8.5" Unwrp. Kurly Straws Asst. Neon 16/125ct (6mm)	2,000	4.7	18.0 x 10.5 x 8.8	0.96	9 x 8	0-22361-87943-9
1244025	8.5" Unwrp. Jumbo Straw Clear 24/500ct (5.8mm)	12,000	13.8	19.4 x 16.8 x 18.1	3.41	4 x 5	0-22361-90643-2
8021861	10" Individually Wrp. Kurly Straws Asst. Neon 20/100ct (6mm)	2,000	5.5	14.2 x 12.9 x 11.7	1.24	9 x 7	0-22361-87591-2
1244023	10.25" Wrp. Jumbo Straw Clear 4/500ct (6mm)	2,000	5.3	12.5 x 12.2 x 12.1	1.07	12 x 7	0-22361-87711-4
1244027	10.25" Wrp. Jumbo Straw White w/ Red Stripe 4/500ct (6mm)	2,000	5.6	12.3 x 12.3 x 11.8	1.03	12 x 7	0-22361-87818-0
1244035	10.25" Unwrp. Jumbo Straw Clear 4/500ct (6mm)	2,000	3.7	11.0 x 10.8 x 11.0	0.76	12 x 7	0-22361-89937-6
1244029	10.25" Wrp. Giant Straw Red 4/300ct (7mm)	1,200	4.8	11.4 x 11.7 x 11.7	0.90	12 x 6	0-22361-87820-3
1244041	10.25" Wrp. Giant Straw Black 4/300ct (7mm)	1,200	4.8	11.6 x 11.5 x 11.6	0.90	12 x 7	0-22361-88807-3
8021856	10.25" Kurly Straw Clip Strip Retail Pack Bilingual 40/50ct (6mm)	2,000	4.7	14.8 x 11.2 x 9.8	0.94	10 x 8	0-22361-88331-3
1245105	10.4" Unwrp. Straw Lime Green 20/500ct (7mm)	10,000	1.5	30.5 x 13.4 x 21.8	5.16	4 x 4	0-22361-87579-0
1249521	12" Wrp. Giant Straw Red 4/500ct	2,000	4.0	14.8 x 13.7 x 14.7	1.72	9 x 6	0-22361-89396-1
1244014	20" Unwrp. Straw Asst. Neon (7mm)	500	2.7	20.6 x 6.2 x 5.1	0.38	14 x 9	0-22361-87782-4

STRAW DIAMETER GUIDE





SIP STICKS & COFFEE STIRRERS



ITEM#	DESCRIPTION	CASE CT.	WEIGHT	L X W X H	CUBE	TI/HI	UPC
-------	-------------	----------	--------	-----------	------	-------	-----

SIP STICKS & COFFEE STIRRERS

1241205	5" Red Double Barrel Coffee Stirrers 10/1,000ct	10,000	9.0	16.8 x 9.3 x 5.3	0.48	10 x 11	0-22361-87709-1
1241222	5" Coffee Stirrers Red 10/1,000ct (3mm)	10,000	4.2	20.3 x 4.5 x 10.3	0.54	20 x 7	0-22361-88477-8
1241210	5" Unwrapped White Coffee Stirrers 10/1000	10,000	5.3	17.3 x 10.0 x 5.5	0.55	10 x 10	0-22361-88993-3
1241203	5.25" Black Sip Stix 10/1,000ct (2.5mm)	10,000	4.4	15.1 x 9.3 x 6.4	0.52	13 x 10	0-22361-87435-9
1241202	5.5" Assorted Neon Sip Stix 10/1,000ct (2.5mm)	10,000	4.5	15.2 x 9.1 x 6.3	0.50	13 x 10	0-22361-87437-3
9041280	5.5" Wrapped Bamboo Coffee Stirrers 10/1000	10,000	12.3	18.1 x 7.3 x 9.7	0.74	16 x 11	0-22361-90211-3
9041290	5.5" Wooden Coffee Stirrers 10/1,000ct	10,000	10.1	9.3 x 5.4 x 11.6	0.34	16 x 11	0-22361-87830-2
1241213	5.5" Wrapped Black Stirrers 10/1000	10,000	4.5	22.3 x 9.5 x 7.1	0.87	8 x 10	0-22361-90209-0
1241215	7" Unwrapped Red w/white Stripe Double Barrel Coffee Stirrers 10/1000	10,000	12.1	17.3 x 9.4 x 7.7	0.73	10 x 9	0-22361-87537-0
1241208	7" Unwrapped Red/White Coffee Stirrer	10,000	5.8	13.6 x 9.4 x 7.9	0.58	13 x 9	0-22361-89311-4
9041295	7.5" Bamboo Coffee Stirrers 10/500ct	5,000	7.2	8.3 x 6.7 x 8.0	0.26	24 x 11	0-22361-88669-7
9041293	7.5" Wrapped Bamboo Coffee Stirrers 10/250	2,500	9.0	14.3 x 9.2 x 7.3	0.56	24 x 11	0-22361-90213-7
1241217	7.75" Wrapped Black Stirrer	5,000	6.7	22.7 x 9.4 x 9.2	1.13	8 x 8	0-22361-89378-7
1241207	7.75" Unwrapped Stirrer Black 10/500ct (3mm)	5,000	5.3	14.3 x 7.5 x 8.5	0.52	15 x 10	0-22361-87439-7
1241206	8" Unwrapped Stirrer Assorted Neon 10/500ct (3mm)	5,000	5.2	14.5 x 7.5 x 8.3	0.52	18 x 9	0-22361-87441-0

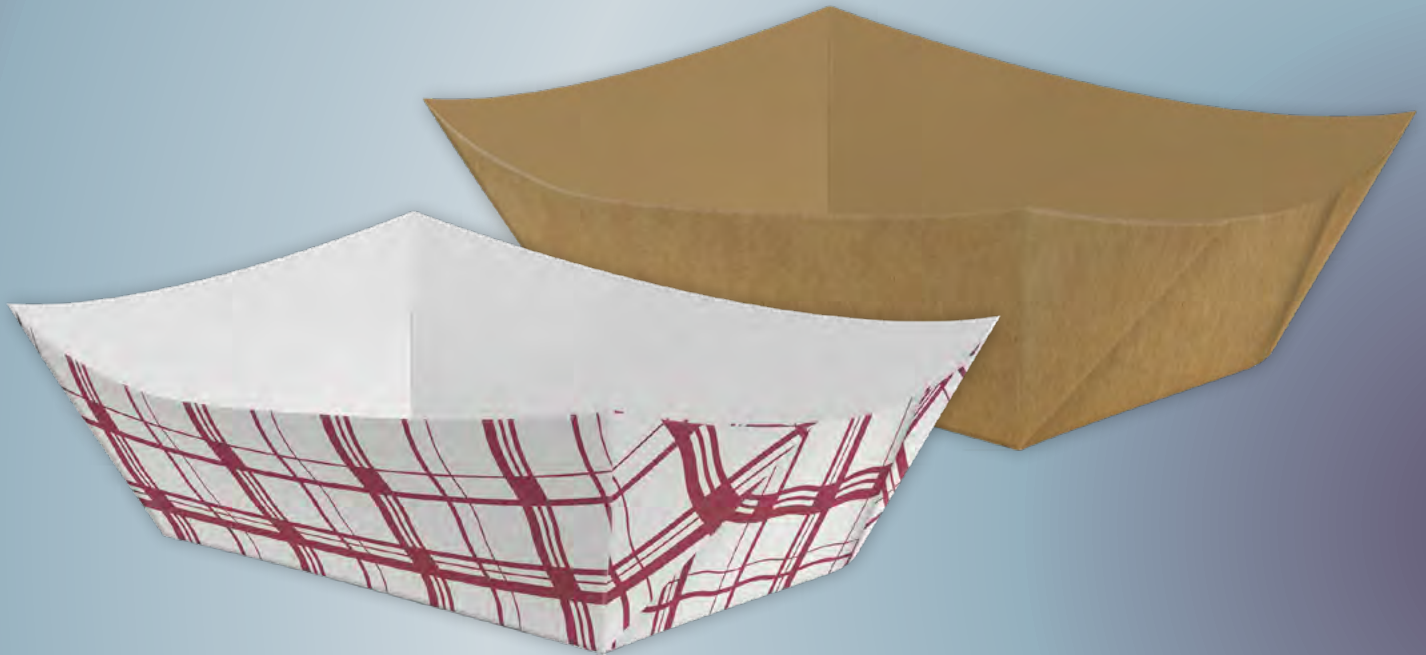
STIRRER DIAMETER GUIDE





WHITE & KRAFT PAPER FOOD TRAYS

- Available in White w/ Red Stripes and Kraft



ITEM#	DESCRIPTION	CASE CT.	WEIGHT	L X W X H	CUBE	TI/HI	UPC
PAPER FOOD TRAYS							
2281516	4 oz. #25 Paper Food Tray - White w/ Red Stripes	1,000	6.1	12 x 7.4 x 09.6	0.5	22 x 5	0-22361-90955-6
2281511	4 oz. #25 Paper Food Tray - Kraft	1,000	7.61	14.5 x 7.09 x 7.09	0.4	15 x 8	0-22361-90637-1
2281576	6 oz. #40 Paper Food Tray - White w/ Red Stripes	1,000	8.3	13.9 x 7.4 x 10.4	0.6	18 x 8	0-22361-90956-3
2281571	6 oz. #40 Paper Food Tray - Kraft	1,000	8.64	13.78 x 6.69 x 10.16	0.5	18 x 8	0-22361-90634-0
2281586	8 oz. #50 Paper Food Tray - White w/ Red Stripes	1,000	8.8	12 x 8.1 x 11.5	0.7	18 x 6	0-22361-90957-0
2281581	8 oz. #50 Paper Food Tray - Kraft	1,000	8.53	19.29 x 7.87 x 11.1	1.0	18 x 6	0-22361-90635-7
2281526	2 lb. #200 Paper Food Tray - White w/ Red Stripes	1,000	17.2	15.4 x 10.6 x 13.3	1.3	12 x 4	0-22361-90959-4
2281521	2 lb. #200 Paper Food Tray - Kraft	1,000	18.1	15.5 x 10.4 x 12.8	1.2	10 x 7	0-22361-90466-7
2281546	3 lb. #300 Paper Food Tray - White w/ Red Stripes	500	14.2	18.11 x 11.42 x 7.87	0.9	10 x 8	0-22361-90960-0
2281541	3 lb. #300 Paper Food Tray - Kraft	500	11.93	14.96 x 11.42 x 7.87	0.8	10 x 8	0-22361-90467-4
2281566	5 lb. #500 Paper Food Tray - White w/ Red Stripes	500	17.73	22.2 x 13.9 x 9.5	1.7	10 x 7	0-22361-90961-7
2281561	5 lb. #500 Paper Food Tray - Kraft	500	16.95	20.5 x 13.6 x 9.6	1.6	10 x 7	0-22361-90468-1
2281596	1 lb. #100 Paper Food Tray - White w/ Red Stripes	1,000	11.0	15.5 x 09.3 x 11.4	1.0	14 x 6	0-22361-90958-7
2281591	1 lb. #100 Paper Food Tray - Kraft	1,000	13.43	21.26 x 9.06 x 11.2	1.2	10 x 4	0-22361-90465-0

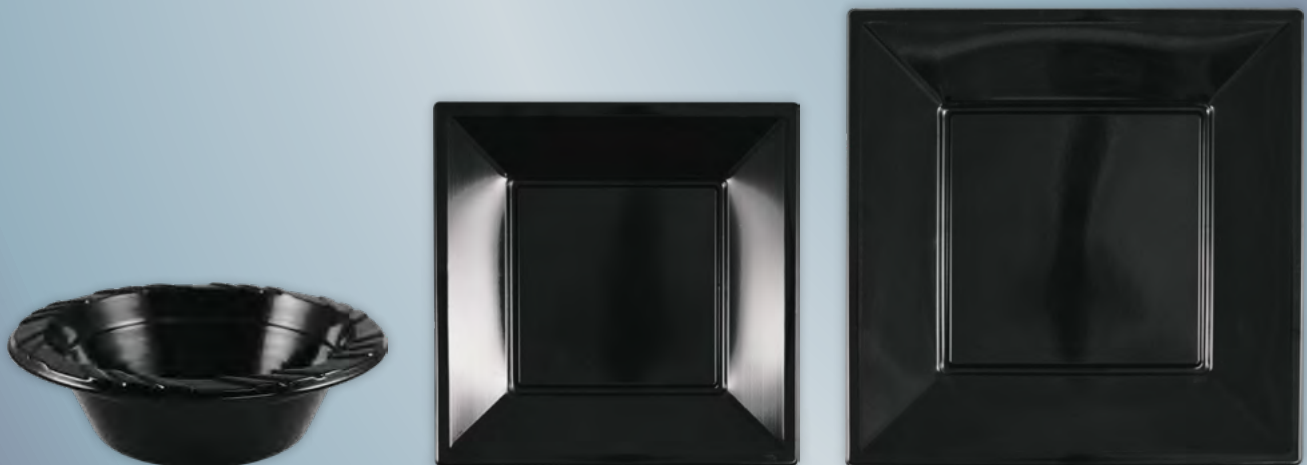


BLACK PLASTIC TABLEWARE

- Available in Round & Square Shapes



ITEM#	DESCRIPTION	CASE CT.	WEIGHT	L X W X H	CUBE	TI/HI	UPC
PLASTIC PLATES & BOWLS							
1291503	6" Round Plastic Black Plate	500	7.7	12.0 x 6.3 x 9.7	0.42	23 x 7	0-22361-89560-6
1291504	7" Round Plastic Black Plate	500	11.0	14.2 x 7.3 x 8.3	0.50	15 x 9	0-22361-89561-3
1291505	9" Round Plastic Black Plate	500	20.3	18.5 x 9.5 x 10.2	1.04	10 x 7	0-22361-89562-0
1291506	12 oz. Plastic Black Bowl	500	11.0	12.0 x 6.3 x 18.7	0.82	23 x 5	0-22361-89563-7
1291507	6" Square Plastic Black Plate	1,000	34.4	15.0 x 15.0 x 13.0	1.69	6 x 6	0-22361-89564-4
1291508	9" Square Plastic Black Plate	1,000	20.7	18.7 x 18.7 x 13.4	2.71	4 x 6	0-22361-89565-1





HOT DRINK PAPER CUPS



ITEM#	DESCRIPTION	CASE CT.	WEIGHT	L X W X H	CUBE	TI/HI	UPC
S-RIPPLE KRAFT HOT DRINK CUPS							
2122715	8 oz. Triple Wall Hot Cup - Kraft	500	15.8	16.5 x 13.2 x 16.7	2.10	9 x 4	0-22361-90567-1
2122716	10 oz. Triple Wall Hot Cup - Kraft	500	19.1	17.3 x 14.4 x 18.2	2.60	5 x 6	0-22361-90568-8
2122717	12 oz. Triple Wall Hot Cup - Kraft	500	22.6	18.1 x 14.4 x 18.1	2.70	5 x 5	0-22361-90569-5
2122718	16 oz. Triple Wall Hot Cup - Kraft	500	25.6	17.9 x 14.4 x 24.0	3.60	5 x 3	0-22361-90570-1
2122725	20 oz. Triple Wall Hot Cup - Kraft	500	28.6	17.9 x 14.4 x 27.6	4.10	5 x 3	0-22361-90571-8

HOT CUP LIDS

2122550	Plastic Lid for 8 oz. Paper Hot Cup White Dome Lid w/ Sip Hole	1,000	7.9	18.7 x 7.3 x 17.3	1.37	12 x 4	0-22361-87739-8
2122560	Plastic Lid for 8 oz. Paper Hot Cup Black Dome Lid w/ Sip Hole	1,000	7.9	18.7 x 7.3 x 17.3	1.37	12 x 4	0-22361-87738-1
2122590	Plastic White Lid for 10, 12, 16, and 20 oz. Hot Drink Cups	1,000	9.5	19.9 x 7.7 x 18.5	1.64	6 x 4	0-22361-87737-4
2122600	Plastic Black Lid for 10, 12, 16, and 20 oz. Hot Drink Cups	1,000	9.5	19.9 x 7.7 x 18.5	1.64	6 x 4	0-22361-87735-7



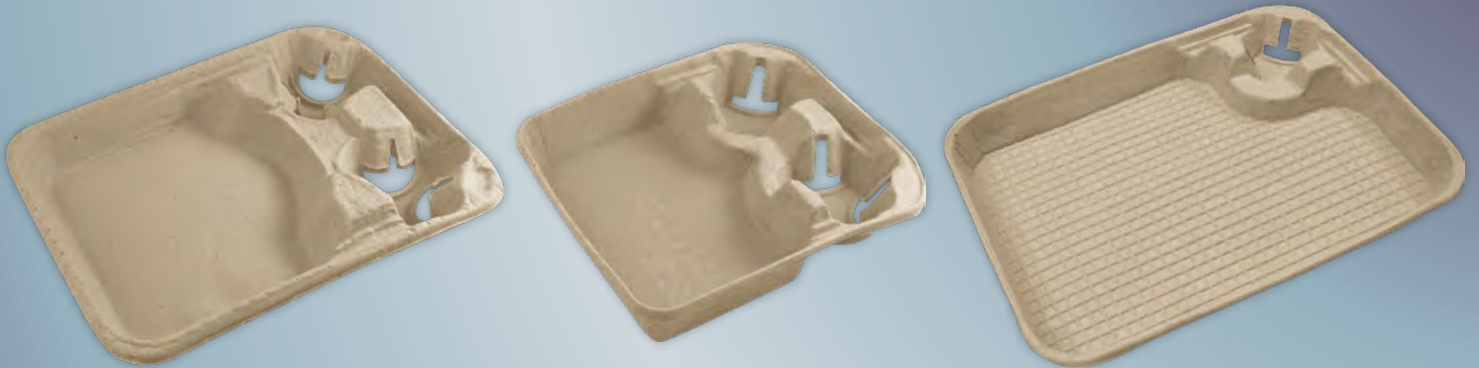


EARTH FRIENDLY CUP CARRIERS

- Made from 100% Recycled Paper & Pulp



ITEM#	DESCRIPTION	CASE CT.	WEIGHT	L X W X H	CUBE	TI/HI	UPC
4-CUP CARRIERS							
1284100	Environ Pulp 4-Cup Carrier Natural	300	28.0	20.5 x 18.0 x 18.0	3.84	4 x 4	0-22361-87039-9
1284105	Environ Pulp 4-Cup Carrier Natural w/ Tray	250	27.0	28.4 x 13.8 x 17.9	4.06	4 x 4	0-22361-89830-0
2281205	Large 4-Cup Carrier w/ Handle	100	13.0	11.0 x 15.5 x 9.5	0.94	10 x 7	0-22361-89841-6



ITEM#	DESCRIPTION	CASE CT.	WEIGHT	L X W X H	CUBE	TI/HI	UPC
CUP CARRIERS W/ LARGE TRAYS							
1284095	Environ Large 2-Cup Carrier w/ Tray, 11" x 15"	100	17.9	23.0 x 15.6 x 13.5	2.80	5 x 6	0-22361-88583-6
1284096	Environ Small 2-Cup Carrier w/ Tray, 8.5" X 9.75"	400	34.0	26.8 x 19.3 x 17.3	5.17	4 x 4	0-22361-89612-2
1284110	Environ Large 1-Cup Carrier w/ Tray, 11" x 15"	100	16.6	23.0 x 15.6 x 13.5	2.80	4 x 6	0-22361-89645-0



EARTH FRIENDLY COMPOSTABLE HOT CUPS



ITEM#	DESCRIPTION	CASE CT.	WEIGHT	L X W X H	CUBE	TI/HI	UPC
SINGLE WALL HOT CUPS							
1369030	4 oz. Single Wall Hot Cup White 62mm	1,000	9.9	12.8 x 10.0 x 15.0	1.11	12 x 6	0-22361-88221-7
1369042	6 oz. Single Wall Hot Cup White 72mm	1,000	13.2	15.1 x 11.9 x 15.4	1.60	8 x 5	0-22361-89236-0
1369031	8 oz. Single Wall Hot Cup White 79mm	1,000	17.6	16.1 x 13.0 x 17.4	2.11	8 x 5	0-22361-88222-4
1369032	10 oz. Single Wall Hot Cup White 89mm	1,000	22.8	18.3 x 14.4 x 17.9	2.73	6 x 5	0-22361-88223-1
1369033	12 oz. Single Wall Hot Cup White 89mm	1,000	28.7	18.4 x 14.5 x 20.9	3.23	6 x 4	0-22361-88224-8
1369034	16 oz. Single Wall Hot Cup White 89mm	1,000	33.1	18.1 x 14.6 x 25.0	3.82	6 x 3	0-22361-88225-5
1369035	20 oz. Single Wall Hot Cup White 89mm	1,000	33.7	18.1 x 14.6 x 26.2	4.00	6 x 3	0-22361-88226-2
1369037	8 oz. Single Wall Hot Cup Kraft 79mm	1,000	17.6	16.1 x 13.0 x 17.4	2.11	8 x 5	0-22361-88228-6
1369038	10 oz. Single Wall Hot Cup Kraft 79mm	1,000	22.8	18.3 x 14.4 x 17.9	2.73	6 x 5	0-22361-88229-3
1369039	12 oz. Single Wall Hot Cup Kraft 89mm	1,000	28.7	18.4 x 14.5 x 20.9	3.23	6 x 4	0-22361-88230-9
1369040	16 oz. Single Wall Hot Cup Kraft 89mm	1,000	33.1	18.1 x 14.6 x 25.0	3.82	6 x 3	0-22361-88231-6
1369041	20 oz. Single Wall Hot Cup Kraft 89mm	1,000	33.7	18.1 x 14.6 x 26.2	4.00	6 x 3	0-22361-88232-3



ITEM#	DESCRIPTION	CASE CT.	WEIGHT	L X W X H	CUBE	TI/HI	UPC
RIPPLE WALL HOT CUPS							
1369016	8 oz. Ripple Double Wall Hot Cup Kraft 79mm	1,000	32.0	16.1 x 13.2 x 23.8	2.93	9 x 3	0-22361-88211-8
1369017	12 oz. Ripple Double Wall Hot Cup Kraft 89mm	1,000	41.9	18.3 x 18.3 x 23.4	4.53	4 x 3	0-22361-88159-3
1369018	16 oz. Ripple Double Wall Hot Cup Kraft 89mm	600	28.7	19.3 x 11.2 x 24.8	2.94	8 x 3	0-22361-88139-5
1369019	20 oz. Ripple Double Wall Hot Cup Kraft 98mm	600	35.3	18.1 x 11.0 x 28.4	3.27	8 x 3	0-22361-88212-5
1369020	8 oz. Ripple Double Wall Hot Cup White 79mm	1,000	32.0	16.1 x 13.2 x 23.8	2.93	9 x 3	0-22361-88160-9
1369022	12 oz. Ripple Double Wall Hot Cup White 89mm	1,000	41.9	18.3 x 18.3 x 23.4	4.53	4 x 3	0-22361-88213-2
1369023	16 oz. Ripple Double Wall Hot Cup White 89mm	600	28.7	19.3 x 11.2 x 24.8	2.94	8 x 3	0-22361-88214-9
1369024	20 oz. Ripple Double Wall Hot Cup White 98mm	600	35.3	18.1 x 11.0 x 28.4	3.27	8 x 3	0-22361-88245-6

EARTH FRIENDLY HOT CUP LIDS

1369021	CPLA Small Hot Cup Lid fits 8 oz. Hot Cup 79mm	1,000	7.5	17.2 x 14.0 x 11.4	1.59	6 x 8	0-22361-88161-6
1369003	CPLA Large Hot Cup Lid fits 10-20 oz. Hot Cup 89mm	1,000	9.3	19.3 x 15.5 x 11.5	1.99	6 x 7	0-22361-88138-8
1369047	CPLA Large DW Hot Cup Lid fits 20 oz. Double Wall Hot Cup 98mm	600	4.9	16.8 x 13.0 x 11.5	1.45	8 x 7	0-22361-88815-8

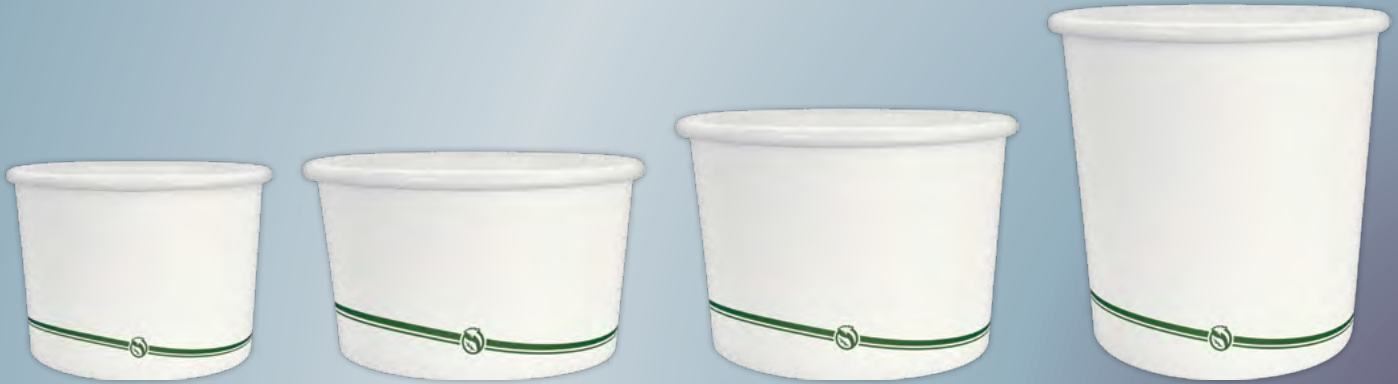
HOT CUP SLEEVE

1365041	Hot Cup Sleeve for 10-20 oz. Cups, Kraft	1,000	14.0	20.1 x 13.4 x 7.7	1.20	8 x 8	0-22361-88668-0
---------	------------------------------------------	-------	------	-------------------	------	-------	-----------------



EARTH FRIENDLY COMPOSTABLE SOUP CUPS

- Compostable Soup Cups & CPLA Lids



ITEM#	DESCRIPTION	CASE CT.	WEIGHT	L X W X H	CUBE	TI/HI	UPC
SOUP CUPS							
1369011	8 oz. White Soup Cup 90mm	1,000	20.9	18.3 x 14.8 x 18.5	2.90	6 x 4	0-22361-88155-5
1369012	12 oz. White Soup Cup 115mm	500	15.4	23.0 x 9.7 x 16.4	2.12	8 x 5	0-22361-88156-2
1369013	16 oz. White Soup Cup 115mm	500	17.6	23.0 x 9.7 x 19.5	2.52	8 x 5	0-22361-88157-9
1369052	24 oz. White Soup Cup 115mm	500	20.2	22.8 x 11.9 x 18.9	2.97	8 x 5	0-22361-89045-8
1369026	8 oz. Kraft Soup Cup 90mm	1,000	20.9	18.3 x 14.8 x 18.5	2.90	6 x 4	0-22361-88217-0
1369027	12 oz. Kraft Soup Cup 115mm	500	15.4	23.0 x 9.7 x 16.4	2.12	8 x 5	0-22361-88218-7
1369028	16 oz. Kraft Soup Cup 115mm	500	17.6	23.0 x 9.7 x 19.5	2.52	8 x 5	0-22361-88219-4

SOUP CUP LIDS

1369014	CPLA Small Soup Container Lid for 6-8 oz. Containers 90mm	1,000	7.3	19.3 x 15.5 x 11.2	1.94	8 x 5	0-22361-88158-6
1369015	CPLA Small Soup Container Lid for 12-32 oz. Containers 115mm	500	7.1	24.2 x 10.5 x 11.0	1.62	6 x 7	0-22361-88210-1





NATURAL CORNSTARCH CUTLERY

- Made from 73% Cornstarch



ITEM#	DESCRIPTION	CASE CT.	WEIGHT	L X W X H	CUBE	TI/HI	UPC
MED. WT. CORNSTARCH BULK CUTLERY							
1058000	Med. Wt. Cornstarch Natural Knife	1,000	6.6	12.3 x 7.1 x 6.6	0.33	23 x 10	0-22361-87500-4
1058001	Med. Wt. Cornstarch Natural Fork	1,000	7.3	17.5 x 8.3 x 7.4	0.62	16 x 9	0-22361-87501-1
1058002	Med. Wt. Cornstarch Natural Teaspoon	1,000	7.0	18.3 x 7.9 x 8.3	0.70	16 x 9	0-22361-87502-8
1058003	Med. Wt. Cornstarch Natural Soup Spoon	1,000	10.3	14.9 x 8.2 x 6.4	0.45	18 x 10	0-22361-87503-5
1058005	Med. Wt. Cornstarch Natural Spork	1,000	8.0	17.5 x 5.9 x 8.3	0.50	16 x 9	0-22361-87575-2
XHVY. WT. CORNSTARCH BULK CUTLERY							
1058150	XHvy. Wt. Cornstarch Natural Knife	1,000	15.8	16.4 x 8.1 x 7.1	0.55	12 x 10	0-22361-87426-7
1058151	XHvy. Wt. Cornstarch Natural Fork	1,000	15.8	19.5 x 7.3 x 9.1	0.75	12 x 8	0-22361-87427-4
1058152	XHvy. Wt. Cornstarch Natural Teaspoon	1,000	11.6	18.5 x 7.1 x 8.7	0.66	12 x 9	0-22361-87428-1
MED. WT. CORNSTARCH INDIVIDUALLY WRAPPED CUTLERY							
1128000	Med. Wt. Cornstarch Knife Wrapped	1,000	9.0	13.3 x 7.1 x 7.5	0.41	15 x 10	0-22361-88461-7
1128001	Med. Wt. Cornstarch Fork Wrapped	1,000	7.4	13.0 x 8.6 x 8.9	0.58	13 x 8	0-22361-88462-4
1128002	Med. Wt. Cornstarch Teaspoon Wrapped	1,000	7.4	13.0 x 7.9 x 8.9	0.53	12 x 8	0-22361-88463-1
1128003	Med. Wt. Cornstarch Soup Spoon Wrapped	1,000	8.7	13.3 x 7.9 x 9.3	0.57	12 x 8	0-22361-88464-8
1128005	Med. Wt. Cornstarch Spork Wrapped	1,000	9.0	13.0 x 11.5 x 8.5	0.74	12 x 8	0-22361-88465-5



BAGASSE TABLEWARE

WITH NO ADDED PFAS



ITEM#	DESCRIPTION	CASE CT.	WEIGHT	L X W X H	CUBE	TI/HI	UPC
BAGASSE TABLEWARE							
1288000	6" White Bagasse Round Plate	1,000	14.5	12.6 x 12.4 x 12.8	1.15	12 x 7	0-22361-90554-1
1288002	7" White Bagasse Round Plate	500	12.4	11.8 x 7.3 x 14.4	0.72	9 x 8	0-22361-90555-8
1288003	9" White Bagasse Round Plate	500	18.9	18.1 x 13.0 x 9.5	1.29	15 x 4	0-22361-90556-5
1287914	9" White bagasse 3-compartment Plate	500	18.9	18.1 x 13.0 x 9.5	1.29	15 x 4	0-22361-90557-2
1288004	10" White Bagasse Round Plate	500	23.4	20.7 x 12.2 x 10.6	1.55	7 x 7	0-22361-90558-9
1287916	10" White Bagasse 3-compartment Plate	500	23.4	20.7 x 12.2 x 10.6	1.55	7 x 7	0-22361-90559-6
1288039	12.5" White Bagasse Round Plate	300	29.5	25.4 x 10.4 x 13.0	1.99	5 x 6	0-22361-90799-6
1288005	10" White Bagasse Oval Platter	500	20.1	15.8 x 14.2 x 10.8	1.40	10 x 6	0-22361-90560-2
1288006	12" White Bagasse Oval Platter	500	32.2	20.5 x 14.2 x 13.2	2.22	9 x 5	0-22361-90561-9
1288007	12 oz. White Bagasse Bowl	500	11.0	18.5 x 6.5 x 13.2	0.91	12 x 5	0-22361-90808-5
1288042	6" White Bagasse Square Plate	500	15.6	11.8 x 6.7 x 13.4	0.61	10 x 8	0-22361-89370-1
1288044	8" White Bagasse Square Plate	500	20.1	16.3 x 11.0 x 8.7	0.90	9 x 9	0-22361-89371-8
1288048	10" White Bagasse Square Plate	500	34.4	11.4 x 10.6 x 21.4	1.49	12 x 5	0-22361-89372-5

BAGASSE CLAMSHELLS

1288020	6x6" White Bagasse Clamshell	500	24.5	17.5 x 12.6 x 12.4	1.58	7 x 7	0-22361-90563-3
1288021	6x9" White Bagasse Clamshell	200	14.6	14.2 x 12.6 x 9.7	1.00	9 x 7	0-22361-90564-0
1288038	8x8" White Bagasse Clamshell	200	18.1	17.8 x 14.6 x 8.5	1.28	7 x 8	0-22361-89373-2
1288026	9x9" White Bagasse Clamshell	200	21.2	18.9 x 16.2 x 9.7	1.72	6 x 9	0-22361-90565-7
1288015	9x9" 3-compartment White Bagasse Clamshell	200	19.8	19.1 x 14.4 x 9.7	1.54	6 x 9	0-22361-90566-4

BAGASSE TRAY

1281005	5-compartment White Bagasse Lunch Tray	500	25.6	16.9 x 12.0 x 10.8	1.27	9 x 8	0-22361-87858-6
---------	----------------------------------------	-----	------	--------------------	------	-------	-----------------





ITEM#	DESCRIPTION	CASE CT.	WEIGHT	L X W X H	CUBE	TI/HI	UPC
PAPER COLD CUPS & LIDS							
2123306	16 oz. Paper Cold Cup Splash Design	1,000	27.6	17.9 x 14.4 x 25.6	3.82	6 x 3	0-22361-90628-9
2123307	21 oz. Paper Cold Cup Splash Design	1,000	40.1	17.9 x 14.4 x 25.8	3.85	6 x 3	0-22361-90629-6
2123308	32 oz. Paper Cold Cup Splash Design	500	24.4	21.1 x 16.7 x 17.5	3.57	6 x 4	0-22361-90630-2
2123309	44 oz. Paper Cold Cup Splash Design	500	28.0	23.2 x 18.7 x 16.9	4.24	4 x 4	0-22361-90631-9
2122323	Lid for 16-32 oz. Cold Cup	1,000	6.2	19.3 x 11.0 x 18.9	2.32	12 x 5	0-22361-89308-4
2122312	Lid for 44 oz. Cold Cup	500	3.9	24.0 x 9.9 x 8.7	1.19	8 x 8	0-22361-88969-8
PLASTIC COLD CUPS & STRAW							
3052301	32 oz. Economy / Car Cup Coke Design	540	34.4	21.75 x 17.0 x 24.0	5.14	6 x 4	C4921448100200
3053182	32 oz. Economy / Car Cup Pepsi Design	540	34.4	21.75 x 17.0 x 24.0	5.14	6 x 4	C7769800200039
1244029	10.25" Wrp. Giant Straw Red 4/300ct (7mm)	1,200	4.8	11.4 x 11.7 x 11.7	0.90	12 x 6	0-22361-87820-3
1245119	10.4" Unwrp. Red Straw 20/500ct	10,000	1.52	10.5 x 6 x 5.75	0.21	4 x 4	0-22361-89925-3





ITEM#	DESCRIPTION	CASE CT.	WEIGHT	L X W X H	CUBE	TI/HI	UPC
POPCORN TUBS & CUPS							
8021675	85 oz. Popcorn Tub	300	19.0	22.8 x 15.4 x 21.3	4.33	5 x 4	0-22361-88078-7
8021676	130 oz. Popcorn Tub	300	25.4	22.7 x 15.7 x 23.6	4.87	5 x 3	0-22361-89523-1
8021677	170 oz. Popcorn Tub	150	19.1	26.4 x 9.1 x 27.2	3.78	5 x 4	0-22361-89497-5
8021674	32 oz. Popcorn Cup	600	20.7	18.9 x 14.7 x 19.8	3.18	6 x 4	0-22361-89603-0



ITEM#	DESCRIPTION	CASE CT.	WEIGHT	L X W X H	CUBE	TI/HI	UPC
POPCORN BOXES & BAGS							
8012000	#2 Popcorn Box Fresh Popcorn Design	500	23.15	13.46 x 9.25 x 15.94	1.15	7 x 8	0-22361-87956-9
8012010	#3 Popcorn Box Fresh Popcorn Design	500	26.5	13.8 x 9.5 x 21.3	1.60	12 x 4	0-22361-87957-6
8012020	#3.5 Popcorn Box Fresh Popcorn Design	500	33.0	16.2 x 11.0 x 21.6	2.23	8 x 4	0-22361-87958-3
8012030	#4 Popcorn Box Fresh Popcorn Design	500	39.8	16.9 x 11.0 x 21.3	2.23	8 x 4	0-22361-87959-0
2271215	46 oz. Flat Bottom Popcorn Bag	1000	19.8	17.3 x 9.1 x 8.7	0.79	10 x 8	0-22361-88963-6
2271216	85 oz. Flat Bottom Popcorn Bag	500	14.3	11.8 x 9.5 x 8.7	0.56	16 x 8	0-22361-88964-3
2271217	130 oz. Flat Bottom Popcorn Bag	500	17.6	11.8 x 10.4 x 8.7	0.62	16 x 8	0-22361-88965-0
2271218	170 oz. Flat Bottom Popcorn Bag	500	11.0	15.8 x 12.2 x 8.7	0.97	8 x 8	0-22361-88966-7



ITEM#	DESCRIPTION	CASE CT.	WEIGHT	L X W X H	CUBE	TI/HI	UPC
LEMONADE PRODUCTS							
8021621	16 oz. Squat Paper Cup Lemon Ice Design	1,000	26.7	19.9 x 16.1 x 21.1	3.91	6 x 4	0-22361-90149-9
8021610	16 oz. Squat Paper Cup Lemonade Design	1,000	26.9	19.8 x 15.9 x 21.9	3.99	6 x 4	0-22361-87052-8
8021660	16/18 oz. Tall Paper Cup Lemonade Design	1,000	25.9	15.0 x 18.2 x 25.9	4.09	6 x 4	0-22361-87051-1
8021680	20 oz. Paper Cup Lemonade Design	1,000	31.4	18.1 x 14.7 x 25.8	3.97	6 x 3	0-22361-87635-3
8021700	32 oz. Squat Paper Cup Lemonade Design	480	28.2	17.3 x 14.2 x 18.0	2.56	6 x 4	0-22361-87616-2
8021642	16 oz. Squat Cup with Lid and Straw Lemonade Design	500	35.0	16.8 x 19.8 x 21.9	4.22	4 x 5	10081354000295
8021652	16 oz. Tall Cup with Lid and Straw Lemonade Design	500	33.0	19.5 x 16.6 x 22	4.12	6 x 4	10081354889180
2121655	Lid for 16 oz. Squat & 24 oz. Tall Lemonade Cups	1,000	6.5	19.6 x 8.3 x 16.0	1.51	12 x 5	0-22361-88363-4
2122991	Lid for 16/18 oz. Tall & 20 oz. Tall Paper Lemonade Cups	1,000	5.4	18.9 x 7.9 x 17.1	1.48	12 x 5	0-22361-88880-6
8022550	32 oz. Economy / Car Cup Lemonade Design	540	30.2	25.6 x 16.9 x 20.1	5.03	6 x 4	0-22361-90303-5
8021715	44 oz. Super Squeeze Cup with Lid and Straw Lemonade Design	210	30.1	20.0 x 15.0 x 20.9	3.63	6 x 4	0-35056-10008-4
8021324	32 oz. Flip-Top Souvenir Cup Lemonade Design	80	17.6	22.5 x 15.4 x 13.8	2.77	5 x 4	0-22361-90146-8
8022520	32 oz. Sleek Cup with Lid and Straw Lemon Ice Design	200	2.7	17.5 x 12.5 x 21.5	2.72	8 x 4	0-22361-90385-1
8022590	32 oz. Sleek Cup with Lid and Straw Lemonade Design	200	2.7	17.5 x 12.5 x 21.5	2.72	8 x 4	0-22361-90384-4
8021602	64 oz. Tanker Lemonade Design	12	12.4	37.5 x 9.5 x 13.3	2.74	5 x 6	0-22361-87797-8
8021613	64 oz. Lemon Ice Tall Tanker with Adjustable Strap	12	7.2	18.5 x 14.4 x 13.4	2.06	7 x 5	0-22361-90855-9
6051431	Extra Large Citrus Squeezer, Yellow Model	1	23.0	10.8 x 7.5 x 24.0	1.13	20 x 3	0-22361-87663-6
6051432	Extra Large Citrus Squeezer, Purple Model	1	17.0	12.5 x 9.8 x 29.5	2.09	16 x 2	8-68181800003-5





ITEM#	DESCRIPTION	CASE CT.	WEIGHT	L X W X H	CUBE	TI/HI	UPC
ICE CREAM SPOONS, CUPS, & LIDS							
1043000	Med. Wt. PS Assorted Dessert Spoons in Purple, Pink, Orange, Yellow & Green 5/200ct	1,000	8.8	14.0 x 10.4 x 6.3	0.53	11 x 10	0-22361-88046-6
2096000	3.5 oz. Ice Cream Cup in Orange	1,000	10.1	15.1 x 12.3 x 14.7	1.58	9 x 5	0-22361-88752-6
2096005	Dome Lid for 3.5 oz. Ice Cream Cup No Hole	1,000	4.4	15.9 x 14.5 x 7.0	0.93	16 x 5	0-22361-88757-1
2096010	5 oz. Ice Cream Cup in Green	1,000	15.1	17.5 x 14.4 x 22.8	3.32	6 x 4	0-22361-88753-3
2096015	Dome Lid for 5 oz. Ice Cream Cup No Hole	1,000	6.6	19.7 x 18.9 x 7.9	1.70	15 x 4	0-22361-88758-8
2096020	8 oz. Ice Cream Cup	1,000	17.6	19.3 x 15.2 x 19.3	3.28	6 x 4	0-22361-88754-0
2096025	Dome Lid for 8 oz. Ice Cream Cup No Hole	1,000	7.1	19.6 x 10.5 x 16.0	1.91	12 x 5	0-22361-88759-5
2096040	12 oz. Ice Cream Cup in Purple	1,000	22.6	22.4 x 18.1 x 20.1	4.35	4 x 4	0-22361-88755-7
2096050	16 oz. Ice Cream Cup in Blue	1,000	28.3	22.0 x 18.6 x 19.1	5.15	4 x 4	0-22361-88756-4
2096055	Dome Lid for 12 & 16 oz. Ice Cream Cup No Hole	1,000	12.3	27.6 x 21.7 x 9.8	3.40	4 x 8	0-22361-88760-1
2096060	Dome Lid for 12 & 16 oz. Ice Cream Cup With Hole	1,000	13.2	23.2 x 19.9 x 9.8	2.62	4 x 8	0-22361-88761-8
3052975	6 oz. Clear Sundae Cup	1,000	18.7	19.5 x 16.3 x 12.8	2.35	6 x 6	0-22361-87625-4
3052985	8 oz. Clear Sundae Cup	1,000	20.9	20.3 x 16.3 x 12.3	2.36	6 x 6	0-22361-87624-7
3052965	12 oz. Clear Sundae Cup	1,000	26.4	20.0 x 16.4 x 14.8	2.81	6 x 3	0-22361-87623-0
3052995	Dome Lid for 6, 8, and 12 oz. Clear Sundae Cups - With Hole	1,000	8.4	20.1 x 19.0 x 8.3	1.83	12 x 9	0-22361-87626-1
3053311	9 oz. Clear Parfait Cup	500	13.1	19.6 x 8.2 x 18.8	1.75	12 x 4	0-22361-87572-1
3053331	12 oz. Clear Parfait Cup	500	15.8	19.4 x 8.4 x 18.4	1.74	12 x 4	0-22361-87848-7
3053341	15 oz. Clear Parfait Cup	500	16.5	19.3 x 8.1 x 19.7	1.78	10 x 4	0-22361-87894-4
3053350	1" Dome Lid for Clear Parfait Cups - With Hole	500	8.6	19.9 x 4.6 x 19.9	1.05	17 x 4	0-22361-87570-7
3053355	8 oz. Clear Banana Boat	500	6.8	8.5 x 8.7 x 8.3	0.36	20 x 9	0-22361-87889-0
3053365	12 oz. Clear Banana Boat	500	9.0	18.5 x 15.0 x 9.8	1.57	6 x 8	0-22361-87890-6
3053351	Dome Lid for Clear Parfait Cups - No Hole	500	6.0	19.9 x 4.5 x 19.9	1.03	20 x 4	0-22361-87571-4
8016590	8 oz. Mini Helmet Ice Cream Cups in Red, Orange, Green, Blue, Purple	300	14.6	18.0 x 12.0 x 12.5	1.53	8 x 6	0-22361-88459-4
8016592	8 oz. Mini Helmet Ice Cream Cups Black	300	14.6	18.0 x 12.0 x 12.5	1.53	8 x 6	0-22361-88467-9
8016594	8 oz. Mini Helmet Ice Cream Cups Red	300	14.6	18.0 x 12.0 x 12.5	1.53	8 x 6	0-22361-88469-3
8016593	8 oz. Mini Helmet Ice Cream Cups Blue	300	14.6	18.0 x 12.0 x 12.5	1.53	8 x 6	0-22361-88468-6
8016591	8 oz. Mini Helmet Ice Cream Cups White	300	14.6	18.0 x 12.0 x 12.5	1.53	8 x 6	0-22361-88466-2





ITEM#	DESCRIPTION	CASE CT.	WEIGHT	L X W X H	CUBE	TI/HI	UPC
FRENCH FRY CUPS & BUCKETS							
2121200	12 oz. Paper French Fry Cup - Checkered Design	1,000	16.5	17.2 x 14.0 x 22.7	3.16	6 x 4	0-22361-87064-1
2121210	16 oz. Paper French Fry Cup - Checkered Design	1,000	18.4	19.7 x 16.1 x 19.9	3.65	6 x 4	0-22361-87065-8
2121220	32 oz. Paper French Fry Cup - Checkered Design	600	19.2	18.9 x 14.9 x 23.2	3.78	6 x 4	0-22361-87066-5
2122200	12 oz. Paper French Fry Cup - Cup O' Fries Design	1,000	16.5	17.2 x 14.0 x 22.7	3.16	6 x 4	0-22361-90620-3
2122210	16 oz. Paper French Fry Cup - Cup O' Fries Design	1,000	18.4	19.7 x 16.1 x 19.9	3.65	6 x 4	0-22361-90621-0
2122221	32 oz. Paper French Fry Cup - Cup O' Fries Design	600	19.2	18.9 x 14.9 x 23.2	3.78	6 x 4	0-22361-90622-7
8021480	48 oz. White Bucket O' Fries Design	130	13.2	30.3 x 13.0 x 13.4	3.05	4 x 6	0-22361-90675-3
8021457	24 oz. White Bucket O' Fries Design	170	12.2	30.3 x 12.2 x 14.6	3.12	5 x 4	0-22361-90346-2



ITEM#	DESCRIPTION	CASE CT.	WEIGHT	L X W X H	CUBE	TI/HI	UPC
NACHO TRAYS & BUCKETS							
1343401	Small 2-Compartment Nacho Tray 5x6" Clear	500	6.9	12.4 x 6.1 x 10.0	0.44	21 x 7	0-22361-87016-0
1343402	Medium 2-Compartment Nacho Tray 6.25x8" Clear	500	16.0	14.4 x 8.5 x 12.5	0.88	10 x 7	0-22361-87017-7
1343403	Large 3-Compartment Nacho Tray 6.75x8.5" Clear	500	16.1	17.6 x 8.9 x 14.0	1.27	10 x 6	0-22361-87888-3
8021511	48 oz. Black Nachos Mucho Bucket	130	13.2	30.3 x 13.0 x 13.4	3.05	4 x 6	0-22361-90674-6
8011518	24 oz. Black Nachos Mucho Bucket	170	12.2	30.3 x 12.2 x 14.6	3.12	5 x 4	0-22361-90353-0
8021582	64 oz. White Tub O' Fun with Handles	75	20.7	23.8 x 16.0 x 14.0	3.09	5 x 5	0-22361-90641-8



ITEM#	DESCRIPTION	CASE CT.	WEIGHT	L X W X H	CUBE	TI/HI	UPC
-------	-------------	----------	--------	-----------	------	-------	-----

NOVELTY THEMED DRINKWARE & FOODSERVICE PRODUCTS

8022333	32 oz. Sleek Cup w/ Lid and Straw Gyro Design	200	20.5	17.5 x 12.5 x 21.5	2.72	8 x 4	0-22361-90408-7
8022334	32 oz. Sleek Cup w/ Matching Lid and Straw Clear EYEC Design	200	20.5	17.5 x 12.5 x 21.5	2.72	8 x 4	0-22361-90454-4
8022026	32 oz. Sleek Cup w/ Lid and Straw Iced Tea Design	200	20.5	17.5 x 12.5 x 21.5	2.72	8 x 4	0-22361-90453-7
8022021	32 oz. Sleek Cup w/ Lid and Straw Root Beer Design	200	20.5	17.5 x 12.5 x 21.5	2.72	8 x 4	0-22361-90511-4
3052120	12 oz. Kid's Cup w/ Red Lid and Assorted Neon Kurly Straw, Animals Design	250	8.5	16.3 x 11.0 x 13.4	1.39	8 x 6	0-22361-90842-9
1391028	4-Color Pack Crayons (Red, Orange, Blue, Green) 10/60ct	600	28.3	19.9 x 8.1 x 10.2	0.95	10 x 7	0-22361-88509-6
8021535	9" Coated Paper Plate It's Gotta Be Italian Design	1,000	31.3	17.9 x 17.9 x 10.3	1.91	8 x 4	0-22361-89855-3
8021490	9" Coated Paper Plate Funnel Cake Design	1,000	31.3	17.9 x 17.9 x 10.3	1.91	8 x 4	0-22361-87005-4





ITEM#	DESCRIPTION	CASE CT.	WEIGHT	L X W X H	CUBE	TI/HI	UPC
TROPICAL CUPS							
8011310	4 oz. Sno Cone Flower Cups Assorted Colors	600	8.4	17.3 x 11.8 x 13.0	1.53	8 x 6	0-22361-48992-8
8011320	8 oz. Sno Cone Flower Cups Assorted Colors	600	15.0	20.9 x 13.8 x 10.2	1.70	5 x 7	0-22361-48996-6
8011300	12 oz. Sno Cone Flower Cups Assorted Colors	400	16.1	21.1 x 15.8 x 12.6	2.43	5 x 6	0-22361-48994-2
8011325	8 oz. Sno Cone Tulip Cups Assorted Jewel Colors	600	19.6	20.7 x 13.8 x 19.3	3.19	5 x 4	0-22361-87796-1
8011681	15 oz. Hurricane Cup	72	13.2	18.1 x 18.1 x 16.1	3.06	5 x 3	0-22361-90347-9
8011661	20 oz. Coconut Cup w/ Straw and Flower 5 Assorted Colors	60	8.8	21.2 x 13.0 x 20.1	3.20	7 x 4	0-22361-90366-0

TROPICAL YARDERS

8011696	24 oz. Palm Tree Cup w/ Lid and Straw	35	11.5	18.5 x 16.5 x 18.1	3.21	6 x 4	0-22361-90341-7
8011697	16 oz. Palm Tree Cup w/ Lid and Straw	40	10.6	20.5 x 13.0 x 19.7	3.03	5 x 4	0-22361-90359-2
8011390	24 oz. Transparent Half Yarder in 5 Assorted Jewel Colors w/ Lid and Straw	33	8.8	16.5 x 14.9 x 17.7	2.52	6 x 4	0-22361-87567-7
8011720	24 oz. Half Yarder in 5 Assorted Colors Red, Orange, Purple, Blue, Green	37	8.2	16.0 x 15.6 x 15.7	2.27	6 x 5	0-22361-87565-3
8011724	16 oz. Mini Yarder in 5 Assorted Jewel Colors w/ Lid and Straw	40	9.9	18.1 x 15.4 x 19.9	3.20	6 x 4	0-22361-90344-8
8011735	16 oz. Bubble Yarder in 5 Assorted Jewel Colors w/ Lid and Straw	48	8.6	20.0 x 12.8 x 15.1	2.24	7 x 5	0-22361-87491-5
8011736	24 oz. Bubble Yarder in 5 Assorted Jewel Colors w/ Lid and Straw	48	10.5	20.7 x 16.5 x 15.8	3.12	6 x 5	0-22361-87490-8





ITEM#	DESCRIPTION	CASE CT.	WEIGHT	L X W X H	CUBE	TI/HI	UPC
PIZZA LID SUPPORTS							
1230100	1" Pizza Lid Supports	1,000	5.9	9.7 x 8.5 x 7.7	0.37	24 x 10	0-22361-49999-6
1230175	1.75" Pizza Lid Supports	1,000	5.4	10.2 x 9.8 x 7.9	0.46	16 x 10	0-22361-49997-2
1230200	2" Deep Dish Pizza Lid Supports	1,000	7.4	11.4 x 9.7 x 7.7	0.49	16 x 10	0-22361-49998-9
DELI SHEETS							
2171317	12" x 12" Dry Wax Deli Sheet Red Checkered 5/1000ct	5,000	40.0	12.6 x 12.6 x 10.2	0.94	9 x 7	0-22361-90433-9
2171318	12" x 12" Dry Wax Deli Sheet Black Checkered 5/1000ct	5,000	40.0	12.6 x 12.6 x 10.2	0.94	9 x 7	0-22361-90436-6
2171319	12" x 12" Dry Wax Deli Sheet Green Checkered 5/1000ct	5,000	40.0	12.6 x 12.6 x 10.2	0.94	9 x 7	0-22361-90435-3
2171320	12" x 12" Dry Wax Deli Sheet Blue Checkered 5/1000ct	5,000	40.0	12.6 x 12.6 x 10.2	0.94	9 x 7	0-22361-90436-0
SWEET TREATS							
8021290	12x18" Cotton Candy Bag Carousel Design	1,000	23.7	13.5 x 12.5 x 8.3	0.81	9 x 10	0-22361-87666-7
8021300	12x18" Cotton Candy Bag Clown Design	1,000	23.7	13.5 x 12.5 x 8.3	0.81	9 x 10	0-22361-87661-2
8021310	12x25" Cotton Candy Bag Bagosaurus Design	500	17.4	13.4 x 12.2 x 7.9	0.75	9 x 10	0-22361-87668-1
8021320	12x33" Cotton Candy Bag Colossus Design	250	10.8	12.6 x 11.8 x 3.7	0.32	12 x 15	0-22361-87670-4
8021481	48 oz. White Bucket Mini Donuts Design	130	13.2	30.3 x 13.0 x 13.4	3.05	4 x 6	0-22361-90676-0
REUSABLE HOT DRINK CUP							
8018358	16 oz. Black Double Wall Reusable Hot Cup & Lid	90	20.0	21.0 x 17.5 x 20.5	4.36	4 x 4	0-22361-88521-8
REUSABLE BAGS							
2011091	Reusable Plain Green Bag	100	11.7	19.75 x 14.75 x 11	1.81	6 x 7	0-22361-88453-2
2011093	Reusable Plain Black Bag	100	11.7	19.75 x 14.75 x 11	1.81	6 x 7	0-22361-88420-4





 www.BerkBrands.com  Info@BerkBrands.com  330.369.1192

TERMS & CONDITIONS

- Lumper and Sort/Segregation fees are at the expense of the customer.
- Container orders: Live-unload with 2 hours free or drop off and pickup available with fee.
- Once container arrives at port, you have 1-2 days to accept delivery before incurring storage fees.
- A finance charge of 0.67% per month (8% APR) will be assessed on any past due balance.
- Effective 06/01/10 there will be a handling charge added to each order.
- Minimize your expense by combining orders!

RETURN POLICY

- Product will only be returned due to order entry or shipping mistake on our behalf, or for damaged products.
- For any reason other than order entry, shipping error, or damages, Berkley Square must approve any returns based on our need for that product. If approved, these types of returns require a 15% restocking fee and the customer is responsible for return freight.
- An RA (Return Authorization) may not be issued on product purchased more than 30 days ago.
- An RA will be deleted if the product has not been returned within 30 days.



**VIEW OUR PRODUCTS
ONLINE**
WWW.BERKBRANDS.COM

- See the full line of products Berk has to offer
- Simple, user-friendly interface
- Support for desktop and mobile devices

